

PACAH

Pennsylvania Coalition of Affiliated
Healthcare & Living Communities



2021 FALL CONFERENCE

September 13 - 15th

Hilton Harrisburg
Harrisburg, PA

TURN YOUR WHEELS TO FUTURE SUSTAINABILITY



Your Management and Consulting Services Partner In Balancing *CARE* and *FINANCIAL STABILITY* In this Post-COVID environment.

- REGULATORY SUPPORT
- FINANCIAL RECOVERY
- REVENUE CYCLE MANAGEMENT
- CLINICAL EXCELLENCE
- REPOSITIONING
- HUMAN RESOURCES ADVISORY
- MARKETING AND REFERRAL DEVELOPMENT
- SENIOR LIVING DEVELOPER AND LENDING SERVICES



Affinity
Health Services

942 Philadelphia Street | Indiana, PA 15701

Call Us Toll-Free at **877-311-0110**

AffinityHealthServices.net



TABLE OF CONTENTS

Executive Director's Welcome	5
Sponsors	8 - 10
Agenda at a Glance	14 - 15
Conference Agenda	16 - 24
Speakers	26 - 27

SPECIAL THANKS TO OUR SPONSORS

Absolute Rehabilitation & Consulting Services, Inc.	7
AdvantageCare Rehabilitation, LLC	11
Affinity Health Services	2
Allstar Therapies	12
Arnett Carbis Toothman, LLP	7
Calmoseptine	12
Complete HealthCare Resources - Eastern, Inc.	11
Kennedy, P.C. Law Offices	13
PA Health & Wellness	6
PELICAN Insurance, RRG	4
Premier Therapy, LLC.	4
Trinity Rehab Services	13



Feeling overwhelmed?

Premier has the expertise to ease your burden.



Premier's proprietary tools and experts make the difference!

- CARE Decision Tool©
- Resident Tracking Assessment Tool©
- Walking Rounds
- Clinical Nurse Consultant & Analyst, RAC-CT
- Education and Regulatory resources
- PDPM training & management tools

"With Premier, we have found a true partner. The executive team provides us invaluable information and reports needed to stay current and plan for the future."

-Doug S., VP of Operations

PREMIER THERAPY 

Vicki Javens, President/Owner

EmbracePremier.com
800.875.7041

Contract Rehabilitation Provider of Physical, Occupational & Speech Therapy



A Reciprocal Risk Retention Group, which provides Professional Liability and General Liability Insurance Coverage.

Member Benefits:

- Conducting onsite facility safety audits and walkthroughs with a dedicated and personal risk control and claims representative who are focused on providing excellent customer service.
- The most competitive bed rates, a \$5,000 risk management grant for each facility and millions in dividends returned to PELICAN subscribers.
- Group rate discounts up to 10% for subscribers with like management companies and PELICAN allocates a portion of annual earnings to each subscribers savings account.
- Free educational training workshops, publications and webinars offered annually.

For more information on PELICAN, please contact Andrew Smith at asmith@pacounties.org or at (717) 736-4769.



Welcome from PACAH's Executive Director

Dear PACAH members and conference attendees –

Welcome to PACAH's 2021 Fall Conference. We are excited to announce that we are finally back in-person – sort of! This year's fall Conference is PACAH's first hybrid conference where we will be offering both in-person and virtual options for attendees. It's the dawning of a new age!

We are all aware of the challenges we have faced, and continue to face, with COVID-19. Thus, I am not going to belabor the point of how times have been tough, and we will get through this. We all understand the COVID-19 has changed the way society views long-term care, most likely forever. With that being said, we wake up each morning facing these new challenges head-on. We must remain resourceful and fluid, willing to approach each challenge as an opportunity to better the life of residents, staff, and our facilities.

This is how we have approach this year's fall Conference. Offering a hybrid option has allowed PACAH to offer new programing to members who aren't able to attend in person. It has allowed us to expand our offerings to licensed professionals who normally aren't part of PACAH conferences. It has pushed us to think outside the box and cause us to question if the way things have always been done if the best way for today. As you accept the challenges of your facility, we accept the challenge to try and offer the best we can while keeping everyone safe.

As we move into fall 2021, I want to, again, express my deepest gratitude towards all the work PACAH members have done over the last 20 months. I am certain the COVID-19 pandemic will be something we share for the rest of our life. We hope everyone enjoys the Conference, whether you attend in-person or virtually.

Along with our President, Andrew Naugle, Executive Board, and Kim, I want to thank everyone for making this conference possible.

Chase Cannon
Executive Director, PACAH





Our Community. Our Health.



PAHealthWellness.com

1-844-626-6813 (TTY 1-844-349-8916)

Absolute Rehabilitation is the preferred provider of comprehensive physical, occupational and speech therapy in post-acute care settings that include skilled nursing facilities, home care, assisted living and outpatient centers.

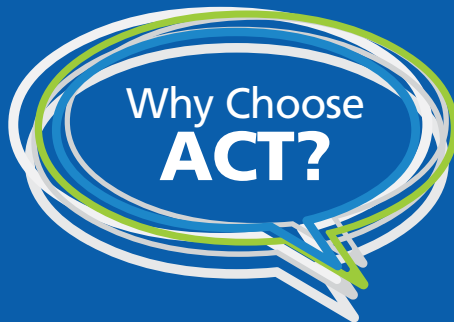


To learn more, contact
John Vesely 330.704.5383



We partner with clients to offer strong clinical skills, in-depth financial expertise, and efficient delivery of quality rehab services.

www.actcpas.com



270 professionals
8 offices
70 years of experience

Here's What Some of Our

Clients Have to Say...

"ACT distinguished themselves on the basis of technical expertise, resource commitment, and value relative to the professional fees."

"I do not hesitate to contact them when I have an issue; they are a trusted business partner."

"In all of our interactions, ACT has been professional, responsive, and thorough in their approach."

"Their staff is amazingly consistent from year to year for the accounting industry. Their knowledge of Medicaid, Medicare, taxes, you name it, is top notch."

ACTION
for your
business



**Arnett
Carbis
Toothman** llp
CPAs & Advisors

800.452.3003

PACAH 2021 FALL CONFERENCE SPONSORS

Affinity Health Services - Welcome Reception

affinityhealthservices.net

Denise McQuown-Hatter, NHA, President and CEO

(877) 311-0110

dmh@affinityhealthservices.net



Senior Community Management
and Consulting Services

Affinity Health Services is in the business of management and advisory services for nursing and assisted living facilities, and retirement communities that thrive for efficient and effective operations. Our mission is to share our affinity for providing consulting and management by customizing services while achieving balance between care and financial stability. We operate in an environment of serving the resident and customer first, offering management and consulting services, operational and clinical support, financial advisory, and marketing referral support.

PA Health & Wellness - Wednesday's Lunch

pahealthwellness.com

Keri Harmicar

Director, Marketing & Community Engagement

(717) 551-8031

keri.l.harmicar@pahealthwellness.com



We understand how important you and your family's healthcare needs are. It's important to us, too. PA Health & Wellness provides quality Medicaid & health insurance plans in Pennsylvania. Our coverage options include a variety of Pennsylvania insurance benefits, member handbooks, and wellness information.

Premier Therapy, LLC - Hotel Room Key Cards

embracepremier.com

Scott M. Slipko, Business Development Manager

(724) 417-8840

sslipko@embracepremier.com



With award-winning leadership, Premier Therapy has the track record of proven results. We work with skilled nursing facilities, providing innovative care for both short-term rehab and long-term patients. Our highly-trained team of managers, therapists, systems and signature programs exceed our customers' clinical and financial expectations. Our take-charge corporate team provides hands-on personalized care delivering blue chip expertise with a personal home-town feeling. This is what differentiates us between other therapy providers.

PELICAN Insurance, RRG - PELICAN Training

pacounties.org/Insurance/PELICAN/Pages/default.aspx

Andrew C. Smith, Risk Control Specialist/PELICAN Marketing Specialist

(717) 736-4769

asmith@pacounties.org



PELICAN Insurance is a risk retentions group (RRG) based out of Vermont and is a sponsored program of PACAH. PELICAN provides general liability and professional liability insurance coverage to all nursing homes in Pennsylvania and Maryland. PELICAN offers dedicated and personal risk control and claims representatives who are focused on providing excellent customer services to PELICAN members. PELICAN is a non-profit group so they regularly return surplus to their members as dividends.

PACAH 2021 FALL CONFERENCE SPONSORS

Advantage - Online Registration

feeltheadvantage.com

Amy Hancock, OT, President/CEO and Co-Owner

(844) 275-2205

ahancock@feeltheadvantage.com

The consultants, practitioners, and health care providers at Advantage work together to achieve one mission: to help people get healthier and achieve independence to improve their outlook and quality of life. Whether you are a facility administrator seeking to improve patient outcomes, or a medical administrator looking for highly qualified and experienced therapists or nurses to fill staffing gaps, the Advantage team can help. That's why we're the ones repeatedly selected to help people heal at home and in residential facilities.



Complete HealthCare Resources - Eastern, Inc. - CEU Tracking

completehealthcareresources.com

Ed Balliet

Chief Operating Officer

(570) 690-6844

eballiet@chrmail.com

We serve a wide range of not-for-profit, county and for-profit elder care communities. We are the region's "go to" experts on timely trends and developments in this rapidly changing industry. But most of all, we have never wavered from our goal of helping providers deliver exceptional care, one person at a time. Our clients include long-term and personal care facilities as well as assisted living homes and residential retirement communities.



Kennedy, PC Law Offices - Registration

kennedypc.net

John N. Kennedy, Esq.

President & CEO

(717) 233-7100

jkennedy@kennedypc.net

Long-term care facilities face unique legal challenges. At Kennedy, PC Law Offices, this is our primary area of practice, and our specialization affords us considerable resources to employ on your behalf. No matter the scope of the issue that your organization is confronting, our team is prepared to assist you. As a provider of long-term care, you have two priorities: the success of your organization and the well-being of your patients.



Allstar Therapies, Inc. - 9/15 Morning Break

allstartherapies.com

Tim Kubistek, MPT, CSCS

Vice President of Operations

(724) 327-3553

tkubistek@allstartherapies.com

Allstar Therapies, Inc. is committed to promoting continued excellence through a patient-centered continuum of care model in every setting. Our objective is to improve physical and cognitive health and achieve improved functional outcome success and client sustainability with integrity, ethical standards, and compassionate care.



PACAH 2021 FALL CONFERENCE SPONSORS

Calmoseptine Tote Insert

calmoseptineointment.com

Kim Saeng

(800) 800-3405

info@calmoseptineointment.com

Calmoseptine® Ointment is an effective, multipurpose moisture barrier that protects and helps heal skin irritations. Many companies have aimed to replicate our product and formula, but Calmoseptine® Ointment perseveres as the original calamine zinc-oxide menthol ointment that has been helping multigenerational households for decades.

§ **Calmoseptine® Ointment**

Absolute Rehabilitation & Consulting Services, Inc. Tote Insert

abshealth.com

John Vesely

Director of Business Development

(330) 704-5383

jvesely@abstherapy.com

Across our multiple divisions, we touch people's lives in their homes and in long-term care facilities. We address health needs related to physical therapy, medications, in-home nursing services, independent living assistance like meal preparation and companionship, and end-of-life care. If you or a loved one requires health-related services outside of a hospital or doctor's office, Absolute Health Services will be there.



Arnett Carbis Toothman, LLP Tote Insert

actcpas.com

Michael J. Kessler, CPA, CGMA

Partner - Health Care Services

(724) 658-1565

Mike.Kessler@actcpas.com

Leaders in accounting and consulting since 1946.

Arnett Carbis Toothman (ACT) provides forward thinking companies and businesses an array of class-leading services, supported by nearly three quarters of a century of accounting and consulting

experience. ACT team leaders and associates are well regarded in their fields and adept at pinpointing and executing the most efficient and cost effective services necessary to maintain the rhythm of your business.



Trinity Rehab Services Tote Insert

trinityrehabservices.com

Susie Murtha, MS, CCC-SLP, RAC-CT

Area Manager

(412) 327-9650

Susie.Murtha@TrinityRehabServices.com

Trinity Rehab Services is a full solution provider of contract Physical Therapy, Occupational Therapy, and Speech Therapy services in post-acute care settings. We build strong, reliable partnerships with an emphasis on patient care, fiscal responsibility, and growth within the post-acute industry.



*Looking for proven results
in an ever-changing healthcare environment?*

**CHR is the RIGHT
choice for YOU!**

CALL TODAY 800.951.0410



Complete HealthCare Resources EASTERN, INC.
STRATEGIC SOLUTIONS FOR SENIOR CARE PROVIDERS

completehealthcareresources.com



AdvantageCare Rehabilitation and Advantage Home Health Services comprise the Advantage Group of Companies, built around providing a true integrated continuum of care for our partners. As post-acute providers, Advantage explores new ways for our partners to deepen the value of their services, optimize efficiencies, while reducing costs and focusing on outcomes and quality care.

888.384.0395
www.feeltheadvantage.com

@feeltheadvantage



THE
THERAPY
YOU NEED,
THE CARE
YOU
DESERVE



Allstar
Therapies

www.AllstarTherapies.com
(724) 327-3553

2030 Ader Road
Penn Township, PA 15644

Multipurpose
Moisture Barrier
Non-Prescription

Protects and Helps
Heal Skin Irritations
From:

- ✓ Incontinence of Urine
or Diarrhea
- ✓ Feeding Tube Site
Leakage
- ✓ Diaper Rash
- ✓ Wound Drainage
- ✓ Minor Cuts & Scrapes
- ✓ Burns / Irradiated Skin

TEMPORARILY RELIEVES
DISCOMFORT & ITCHING

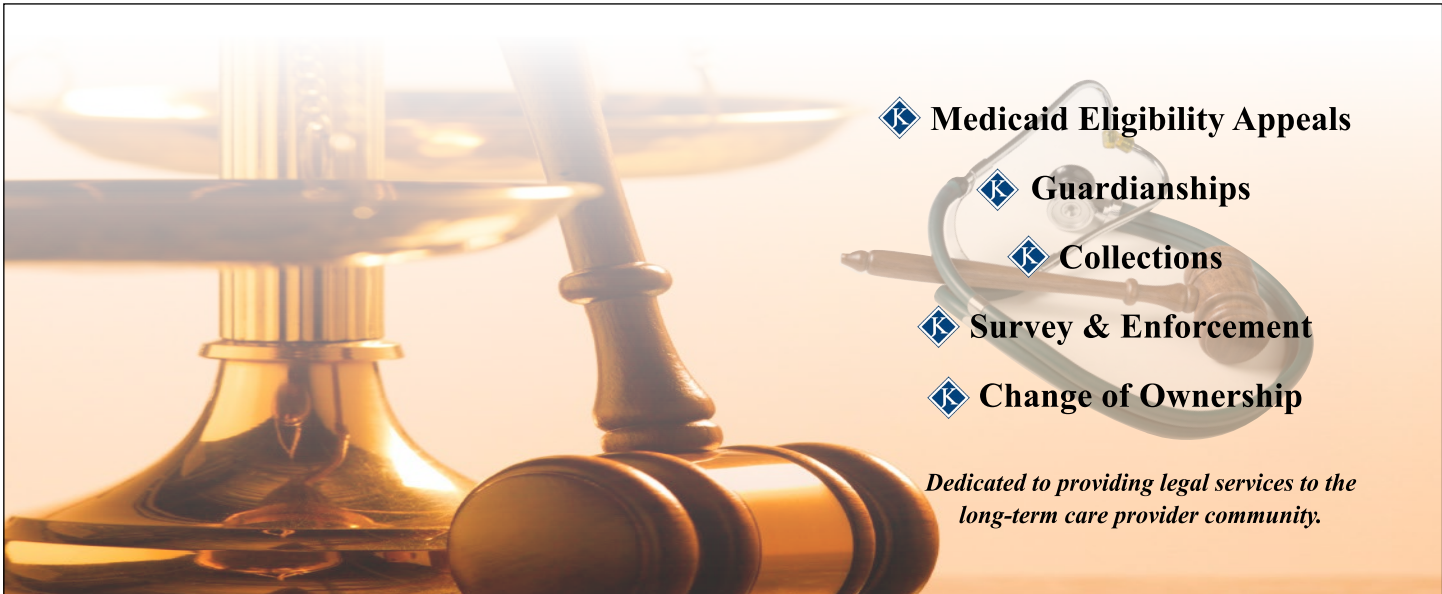
Calmoseptine® Ointment

Available in 20g Tubes, 2.5 oz Tubes,
2.5 oz Jars, 4 oz Tubes, and
1/8 oz Packets (144 per box)



Suggested Retail
4 oz tube
\$7.50

For more information and free samples call: 1-800-800-3405 • www.calmoseptine.com



- ◆ Medicaid Eligibility Appeals
- ◆ Guardianships
- ◆ Collections
- ◆ Survey & Enforcement
- ◆ Change of Ownership

Dedicated to providing legal services to the long-term care provider community.

John N. Kennedy, Esquire †*§
 Rodney A. Myer, Esquire †*
 Benjamin J. Glatfelter, Esquire †*§
 Laurie S. Kennedy, Esquire †
 Casey L. Slotter, Esquire †€
 Adam P. Fleischer, Esquire †*◆
 Kevin L. Morris, Esquire † §

† Licensed in Pennsylvania
 § Licensed in Maryland
 * Licensed in New Jersey
 € Licensed in Ohio
 ◆ Licensed in New York



KENNEDY, PC
 LAW OFFICES

www.kennedypc.net | Toll Free (877) 833-7100

Locations:

Harrisburg, PA | Harleysville, PA | Carnegie, PA
 Annapolis, MD | Cherry Hill, NJ | New York, NY

**Your Partner throughout
the Post-Acute Spectrum of Care**

Learn more about us
www.trinityrehabservices.com

Moving Forward — Beyond Therapy

Trinity Rehab Services is dedicated to true partnership through comprehensive integration with our Partners' teams and services. We go *beyond* the Rehabilitation Department offering expertise in various areas related to Patient Care and Business Administration.

⇒ **Staffing Beyond Therapy**

- Recruitment services for all open positions from leadership to direct care staff
- Utilizing therapy staff to assist with facility staffing needs
- Partnering with Nursing to manage the Restorative Nursing Program

⇒ **Consulting Beyond Therapy**

- Technology Integration
- Reimbursement
- Compliance
- State Readiness
- Infection Control
- Medical Review

⇒ **Marketing Beyond Referral Sources**

- Attendance at Marketing Events
- Accompanying Patients to Physician Visits
- Organization of Home Health, Outpatient Services, and Wellness Programs
- Provision of Education for ALF, ILF, HH, and the Community

⇒ **Programming Beyond Value Based Care**

- Specialty Programming related to care risk areas
- Creation of facility post-discharge process for patient follow-up through day 30
- Improved outcomes with emphasis on maximizing functional targets

Our Management Team goes *beyond* therapy consisting of licensed therapists with varied certifications, licensures, and training including:

- CHCIO
- CEHCH
- CHC
- RAC-CT
- CPC
- PHR
- LNHA
- IPC



For additional information, please contact us at info@trinityrehabservices.com or 850-896-5015



Pennsylvania Coalition of Affiliated
Healthcare & Living Communities

2021

Fall Conference

... AT A GLANCE

MONDAY, SEPTEMBER 13TH

10 a.m. - noon	PACAH Executive Board Meeting (Private)
11 a.m. - 4 p.m.	Registration
1 - 4:15 p.m.	PELICAN Training - Emergency Preparedness - a Full Time Challenge
2:30 - 3:30 p.m.	Afternoon Snack Break
2 p.m. - 4 p.m.	Fiscal Management Committee Meeting (Private)
5 - 7 p.m.	Welcome Reception

TUESDAY, SEPTEMBER 14TH

7 - 8 a.m.	Continental Breakfast
7 a.m. - 4 p.m.	Registration
8 - 9 a.m.	Keynote Speaker - Kelly Swanson - Creating a Story Driven Team
9:30 - 10:30 a.m.	Cyberterrorism: Attack on the Core Infrastructure
9:30 - 10:30 a.m.	Interdisciplinary Approach to Cognitive Impairment
10:30 - 11:30 a.m.	Morning Snack Break
10:45 - 11:45 a.m.	Medicaid Eligibility: Current Solutions to Common Problems
10:45 - 11:45 a.m.	Do We Need Healthier Buildings? What are they - How do We Get There?
11:45 a.m. - 12:45 p.m.	Lunch
1 - 2 p.m.	Pennsylvania Department of Health Update
2:15 - 3:15 p.m.	Defensive Documentation



- 2:15 - 3:15 p.m. Apology - Do I, or Don't I?
- 3:15 - 4:15 p.m. Afternoon Snack Break
- 3:30 - 4:30 p.m. Long-Term Care Admissions Agreements
- 3:30 - 4:30 p.m. Improved Quality Measures through Comprehensive Pain Management

WEDNESDAY, SEPTEMBER 15TH

- 7 a.m. - 4 p.m. Registration
- 8 - 9 a.m. PACAH Business Meeting, Legislative Update & Breakfast
- 9:15 - 10:15 a.m. Understanding OSHA's COVID-19 ETS
- 10:15 - 11:15 a.m. Morning Snack Break
- 10:30 - 11:30 a.m. Looking for Will Robinson - Artificial Intelligence in Senior Care
- 10:30 - 11:30 a.m. Improving Clinical Outcomes and INcreasing Census: Influence Quality Measures and Mitigate Risk with Live Data
- 11:30 a.m. - 1:30 p.m. Vendor Show & Lunch
- 1:45 - 2:45 p.m. MCO Panel
- 1:45 - 2:45 p.m. The Data of Wound Care in the Nursing Home

Full Conference agenda begins on page 16



Pennsylvania Coalition of Affiliated
Healthcare & Living Communities

2021 FALL CONFERENCE AGENDA

CREDIT APPROVAL NOTICE

The 2021 fall educational offerings have been submitted to the National Continuing Education Review Service (NCERS) of the National Association of Long Term Care Administrator Boards (NAB) for 19.5 total credit hours for Nursing Home Administrators and 19.5 total credit hours for Assisted Living Residence Administrators. (13.5 maximum available)
Program Approval Code: 20220912-19.50-A78011-IN

PACAH is an approved provider through the Department of Human Services Bureau of Human Services Licensing.
Total CEUs available: 11

This program offers 19.5 total credit hours fulfilling the requirements of the Pennsylvania State Board of Nursing. (13.5 maximum available)

PACAH is registered with the Pennsylvania State Board of Accountancy and is approved for 8 total credit hours.

This program has been approved for continuing education (CE) hours by the Certifying Board for Dietary Managers for 19.5 General CE Hours. Approval #165923 (13.5 maximum available)

CEU LEGEND

NHA - Nursing Home Administrators	RN - Nursing
RC/AL - Assisted Living Administrators	CPE - Fiscal
PC - Personal Care Home Administrators	CBDM - Dietary



CERTIFICATES OF ATTENDANCE

Certificate of attendance retrieval information will be distributed via email by October 12, 2021. NAB/Ncers CEUs will be uploaded to the registry per NAB/Ncers guidelines.

MONDAY, SEPTEMBER 13TH

PACAH EXECUTIVE BOARD MEETING AND LUNCH (PRIVATE)

10 a.m. - noon
Governor Board Room

REGISTRATION

11 a.m. - 4 p.m.
Bridgeport Board Room

GENERAL SESSION - PELICAN TRAINING - "EMERGENCY PREPAREDNESS - A FULL TIME CHALLENGE"

1 - 4:15 p.m.
NHA - 3
RC/AL - 3
PC - 3
RN - 3
CBDM - 3

Emergency preparedness has become more of a challenge than ever before. The types of incidents we deal with today are dynamically different from what we were dealing with just a few years ago. And, federal and state regulatory agencies have gotten involved, and are passing regulations that make true “emergency preparedness” a full time challenge.

In this session, Steve Wilder, a nationally recognized healthcare safety and security specialist and a frequent PACAH speaker, will look at the concept of emergency preparedness, how to identify your likely vulnerabilities, how to build your plan, and how to test your plan and your people. In addition, Steve will talk about the recent steps taken by the Occupational Safety and Health Administration (OSHA) as it relates to COVID, and will provide direction on what to do to prepare for an OSHA visit, and how to respond when/if OSHA shows up.

Objectives:

- Be able to explain the purpose of a Hazard Vulnerability Assessment (HVA), what is included in the HVA, and how to use the HVA to develop your plan.
- Explain the concept of the Nursing Home Incident Command System (NHICS) and the Assisted Living Incident Command System (ALICS) and how to incorporate Incident Command into your Emergency Operation Plan.
- Identify and explain three types of emergency preparedness drills.
- Explain the new position taken by OSHA regarding protecting healthcare workers from COVID-19 in long-term care facilities

*Steve Wilder, BA, CHSP, STS, COO
Sorensen Wilder & Associates*

AFTERNOON BREAK - SPONSORED BY PELICAN INSURANCE, RRG

2:30 - 3:30 p.m.

Pre-Lancaster Ballroom

FISCAL MANAGEMENT COMMITTEE MEETING (PRIVATE)

2 - 4 p.m.

Governor Board Room

WELCOME RECEPTION - SPONSORED BY AFFINITY HEALTH SERVICES, INC.

5 - 7 p.m.

Metropolitan Room

TUESDAY, SEPTEMBER 14TH

REGISTRATION

7 a.m. - 4 p.m.

Bridgeport Board Room

CONTINENTAL BREAKFAST

7 - 8 a.m.

Pre-Lancaster Ballroom

GENERAL SESSION - KEYNOTE, KELLY SWANSON - “CREATING A STORY DRIVEN TEAM”

8 - 9 a.m.

Lancaster/Gettysburg Ballroom

NHA - 1

RC/AL - 1

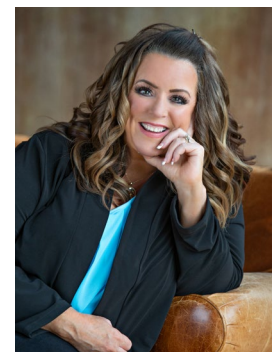
PC - 1

RN - 1

CBDM - 1

Help Your Team Connect and Engage Through the Power of Your Story

Is your team burned out and dealing with a lot of stress and change? Well, this is the perfect program for you. Kelly will get both you and your team tapped back into passion and purpose for what they do and why it matters. Kelly uses story to show your employees how their small piece in this puzzle makes



a big difference to the lives of others. Not just so they are told they matter - but that they are SHOWN they matter.

Kelly will teach the key principles that keep a team working together instead of apart, by helping them get a renewed sense of passion for their organization, company, or facility story. She will also show you how to cultivate a healthy attitude that makes work not feel so much like work.

This is NOT a program on dealing with difficult people. This is not another program on dealing with millennials. This is a program on how to connect and engage with the people you serve - how to motivate each other and ourselves. This is based on the idea that getting a team engaged happens when you connect them to the company story - when you connect to the employee story - and when you connect to the story of the people you serve.

Audience Take-Aways

- Learn Kelly's six secrets to connect and engage
- Learn how to rewrite your inner script to deal with stress and change
- Learn how to inspire and motivate others through story
- Practice connecting through story
- Learn some basic networking skills that connect and engage

Kelly Swanson, Award-Winning Storyteller, Funny Motivational Speaker, Strategic Storyteller

BREAKOUT SESSION - "CYBERTERRORISM: ATTACK ON THE CORE INFRASTRUCTURE"

Delaware/Juniata Ballroom

9:30 - 10:30 a.m.

NHA - 1

RC/AL - 1

PC - 1

RN - 1

CBDM - 1

Cyberterrorism has been in the news for quite some time and seems to be in the headlines on a daily basis. Cyberterrorism is becoming or has become the primary method of bad actors acting on behalf of nation states to cause severe disruption or widespread fear in society. Their main goal has been to attack the core infrastructure of society to interrupt the way of life of others. The end result is the spread of fear, interruption in the economy, interruption in key services, food supply, basic utilities, health care services and financial services among others.

Understanding cyberterrorism and the cybersecurity that is used to combat cyberterrorism is critical. In this session, we will highlight and discuss the recent trend of the cyber-attacks on core components of infrastructure with a focus on how the healthcare industry is at the core of the critical infrastructure throughout the world and a primary target of the bad actors. A discussion on the methods used by the bad actors while conducting the cyber-attacks will be addressed. In addition, the ongoing controls will be discussed and identified along with the recent trends to combat the ongoing battle with cyberterrorism.

Objectives:

- Provide attendees an increased understanding of the direction of cybercriminals/bad actors regarding their desired targets and the risk to the healthcare industry.
- Provide attendees with an understanding of the trends in the attack methods utilized by the cybercriminals.
- An identification of the ongoing controls including the recent trends implemented to combat cyberterrorism along with the attendees' role in implementing the controls.

*Christopher E. Joseph, CPA, CISA, CRISC, CITP, Partner - Consulting Services
Arnett Carbis Toothman LLP*

BREAKOUT SESSION - "INTERDISCIPLINARY APPROACH TO COGNITIVE IMPAIRMENT"

Susquehanna/Allegheny Ballroom

9:30 - 10:30 a.m.

NHA - 1

RC/AL - 1

PC - 1

RN - 1

CBDM - 1

With our residents and family members reuniting, this presentation allows for an overview of an interdisciplinary approach to your residents' overall health and safety. Cognitive declines can affect all aspects of Activities of Daily Living. We will be reviewing approaches and interventions to help with maintaining the highest level of function for your residents while maximizing personal safety and promoting resident dignity. This system may include internal compensatory strategies and/or external environmental/visual cues. You will learn how a patient-centered approach will decrease behaviors and increase a resident's feelings of self-worth. The goal is to involve the interdisciplinary team in promoting the resident's safety and independence with all functional daily living tasks.

*Lisa A. Beck, MS, CCC, SLP, Clinical Director
AdvantageCare Rehabilitation, LLC*

MORNING SNACK BREAK

10:30 - 11:30 a.m.

Pre-Lancaster Ballroom

BREAKOUT SESSION - "MEDICAID ELIGIBILITY: CURRENT SOLUTIONS TO COMMON PROBLEMS"

Delaware/Juniata Ballroom

10:45 - 11:45 a.m.

NHA - 1

RC/AL - 1

PC - 1

RN - 1

CPE - 1

CBDM - 1

Through an interactive session using real-world examples, the presenters will discuss current solutions to the most common Medicaid eligibility problems that continue to plague nursing homes across the Commonwealth, including uncooperative residents and family members, transfer penalties, collection matters, BHA stipulations and much more. While doing so, the presenters will bring the audience up-to-date on the current status of any COVID-19 related changes implemented in 2020 and 2021.

*John N. Kennedy, Esq., Founder, President & CEO
Benjamin J. Glatfelter, Esq., Shareholder
Casey L. Slotter, Esq., Attorney
Kennedy, PC Law Offices*

BREAKOUT SESSION - "DO WE NEED HEALTHIER BUILDINGS? WHAT ARE THEY, HOW DO WE GET THERE?"

Susquehanna/Allegheny Ballroom

10:45 - 11:45 a.m.

NHA - 1

RC/AL - 1

PC - 1

RN - 1

CBDM - 1

Due to the increased intensity of study of how the coronavirus is spread comes renewed interest in the healthcare physical environment, and in particular, its role in infection prevention. This session will inform attendees of current and upcoming standards and materials for "better" buildings. Beginning with a review of existing and emerging healthy building standards, and certifications such as Leadership in Energy and Environmental Design (LEED) and the WELL Building Standard, discussion with touch on building codes, Facility Guidelines Institute (FGI) guidelines, and related references. Healthier and more environmentally friendly materials used in renovation and new construction, as well as mechanical and lighting systems will be reviewed. Air quality issues will be presented covering air filtration for pathogens. The presentation will also cover current advances in lighting to more closely align with human circadian rhythms. Lastly, discussion will also include how outdoor spaces, and natural lighting can help contribute to a healthier overall environment.

*Walt Zapor, Senior Associate
KCBA Architects*

*Nick Kaintz, Vice President
Snyder Hoffman Associates*

LUNCH

11:45 a.m. - 12:45 p.m.

Pre-Lancaster Ballroom

GENERAL SESSION "PENNSYLVANIA DEPARTMENT OF HEALTH UPDATE"

Lancaster/Gettysburg Ballroom

1 - 2 p.m.

NHA - 1

RC/AL - 1

PC - 1

RN - 1

CBDM - 1

This session will feature the director of the division of nursing care facilities who will provide timely information on the operations of her department as it relates to surveys and licensing. She will discuss updates and statistical data on Pennsylvania's nearly 700 nursing facilities, new emphasis from the federal government, and other issues, impacting nursing facilities from the perspective of licensing and surveys. The director of the division of safety inspection will also provide updates on critical life-safety issues.

Charles Schlegel, Director, Division of Safety Inspection

Susan Williamson, Director, Division of Nursing Care Facilities

Pennsylvania Department of Health, Division of Long-Term Care

BREAKOUT SESSION - "DEFENSIVE DOCUMENTATION"

Delaware/Juniata Ballroom

2:15 - 3:15 p.m.

NHA - 1

RC/AL - 1

PC - 1

RN - 1

CBDM - 1

In today's litigious culture, documentation in the medical record is the primary source utilized when it comes to trying to defend the care and services that have been provided. This session is geared toward providing strategies and key elements in medical record documentation to meet the challenges of documenting defensively.

Objectives:

- Review the role of the medical record in litigation
- Describe key requirements of a defensible medical record
- Understand how the medical record is used to prove/disprove allegations

Angela M. Huffman, RN WCC, Vice President of Clinical Services

Affinity Health Services

BREAKOUT SESSION - "APOLOGY - DO I, OR DON'T I?"

Susquehanna/Allegheny Ballroom

2:15 - 3:15 p.m.

NHA - 1

RC/AL - 1

PC - 1

RN - 1

CBDM - 1

Apology and disclosure, is a balancing act faced by risk managers in any part of the healthcare industry, but perhaps more so in the arena of continuing care communities, skilled nursing and long-term care facilities. The basic tenant of a safe and secure residence is a mainstay in these communities. This session will address the issues faced by administration and risk management when confronted with a patient safety incident, including disclosure and potentially an apology for same. While disclosure of patient safety incidents is mandatory, an accompanying apology is not. Many healthcare providers want to offer an apology when something untoward happens, but are concerned about the effect of expressing sympathy and/or regret to a patient/resident/family member should the incident result in litigation. In acknowledgment of this concern,

numerous states have enacted so called "Apology" statutes specifically intended to protect healthcare providers from having an apology used against them in future litigation under certain circumstances. We will examine and discuss Pennsylvania's "Apology" statute and compare it to other states' statutes and how an effective expression of sympathy and regret during disclosure of a patient safety incident can trigger statutory protection should the patient/resident/family decide to pursue litigation.

Roseann Lynn Brenner, Esq., Member
Elizabeth Syer-Ashmore, Esq., Member
Goldfein and Joseph, P.C.

AFTERNOON SNACK BREAK

3:15 - 4:15 p.m.

Pre-Lancaster Ballroom

BREAKOUT SESSION - "LONG-TERM CARE ADMISSION AGREEMENTS"

Delaware/Juniata Ballroom

3:30 - 4:30 p.m.

NHA - 1

RC/AL - 1

PC - 1

RN - 1

CBDM - 1

This course is intended to provide information about admission agreements at long-term care facilities and communities and how these agreements should be reviewed with scrutiny. This course will address general contract principles in the context of these agreements, including a review of the Pennsylvania filial responsibility law. This course will also address providing financial information to a long-term care facility as part of an application for admission. Other matters to discuss include the importance of a power of attorney or legal representative to assist in this process, the ability to negotiate admission agreements, the necessary parties to these agreements, and understanding the duration and/or early termination of these agreements.

Nora Gieg Chatha, Esq., Shareholder
Jennifer Bittel Derby, Esq., Associate
Tucker Arensberg, P.C.

BREAKOUT SESSION - "IMPROVED QUALITY MEASURES THROUGH COMPREHENSIVE PAIN MANAGEMENT"

Susquehanna/Allegheny Ballroom

3:30 - 4:30 p.m.

NHA - 1

RC/AL - 1

PC - 1

RN - 1

CBDM - 1

Pain is likely the number one cause of impaired function, increased behaviors and re-admissions to the hospital. Therefore, it is vital to have a comprehensive pain management program that analyzes and establishes accountability in your facility. Join us to learn more about assessment and treatment of pain in a variety of diagnoses as well as how pain affects quality measures, resident's long-term outcomes and quality of life. We will discuss the structure and components of a comprehensive pain management program that is effective, and outcomes driven.

Objectives:

- Participant will be able to perform and describe pain assessment and treatment plans for a variety of diagnoses.
- Participant will be able to explain how pain affects patient outcomes.
- Participant will be able to describe a comprehensive pain management program that enhances quality of life of residents and decrease burden of care of staff and families.

Heather Meadows, CCC/SLP, Executive Director of PA, CDP
Premier Therapy, LLC

WEDNESDAY, SEPTEMBER 15TH

REGISTRATION

7 a.m. - 4 p.m.

Bridgeport Board Room

GENERAL SESSION - "PACAH BUSINESS MEETING, LEGISLATIVE UPDATE & BREAKFAST"

Lancaster/Gettysburg Ballroom

8 - 9 a.m.

NHA - 1

RC/AL - 1

PC - 1

RN - 1

CBDM - 1

PACAH's Executive Director will update members on current policy, regulatory and legislative issues impacting long-term care facilities. These updates will include information on funding, IGT, Community HealthChoices, COVID-19, and other pertinent issues.

*Chase Cannon, Executive Director
PACAH*

GENERAL SESSION - "UNDERSTANDING OSHA'S COVID-19 ETS"

Lancaster/Gettysburg Ballroom

9:15 - 10:15 a.m.

NHA - 1

RC/AL - 1

PC - 1

RN - 1

CBDM - 1

The Occupational Safety and Health Administration (OSHA) has issued mandatory requirements for nursing homes, personal care homes, assisted living facilities and other healthcare employers to protect workers from COVID-19. These new regulations went into effect July 21, 2021, and OSHA has begun inspections applying these new requirements.

This session will review OSHA requirements for healthcare employers including but not limited to mandatory training, job protection and payments to employees, written respiratory protection program elements, environmental modifications and nonretaliation.

Objectives:

- Compare their existing respiratory protection programs to OSHA requirements
- Understand medical removal provisions and payment obligations
- Be prepared for an OSHA investigation

*Paula G. Sanders, Esq., Principal and Co-Chair, Health Care Practice Group, Chair COVID-19 Task Force
Post & Schell, P.C.*

MORNING SNACK BREAK

10:15 - 11:15 a.m.

Pre-Lancaster Ballroom

BREAKOUT SESSION - "LOOKING FOR WILL ROBINSON - ARTIFICIAL INTELLIGENCE IN SENIOR CARE"

Delaware/Juniata Ballroom

10:30 - 11:30 a.m.

NHA - 1

RC/AL - 1

PC - 1

RN - 1

CPE - 1

CBDM - 1

Through the integration of artificial intelligence (AI), the long-term care industry can strategically serve seniors better by making treatment more effective and efficient.

Attendees will learn:

- How automated data analysis assists staff with the information needed to fully personalize patient care.
- How improved technology can reduce the amount of time spent on administrative tasks, allowing them to focus on the more human-centered aspects of their roles.
- How certain technologies can alleviate isolation for seniors.
- How wearable tech and remote monitoring can greatly enhance Independence without jeopardizing safety.
- What are the legal implications of AI: (a) Informed consent, (b) safety and transparency (c) effectiveness (d) data protection/privacy, (e) cyber-security and (f) liability.
- How to protect the facility and the residence through careful vendor contracting.

*Cynthia A. Haines, Esq., Principal and Co-Chair, Information Privacy & Security Practice Group
Post & Schell, P.C.*

BREAKOUT SESSION - "IMPROVING CLINICAL OUTCOMES AND INCREASING CENSUS: INFLUENCE QUALITY MEASURES AND MITIGATE RISK WITH LIVE DATA"

Susquehanna/Allegheny Ballroom

10:30 - 11:30 a.m.

NHA - 1

RC/AL - 1

PC - 1

RN - 1

CPE - 1

CBDM - 1

The COVID-19 pandemic has exposed a lot of inefficiencies within healthcare - one of the largest being the ability to access and analyze live patient data to improve clinical and financial outcomes.

During this session we will discuss how to leverage live electronic health record (EHR) data to improve facility quality measures and mitigate risk. We'll explore what quality measures truly mean to the clinical well-being of your patients, how they impact Five-Star Quality Ratings, and which ones are of most interest to hospitals and payers. Through this understanding, we'll show you strategies you can use to improve your five-star rating and increase referrals with healthcare partners and the community. Finally, we will take a look at how the use of live data is enabling clinical leaders to quickly identify their most at-risk patients to mitigate that risk and improve outcomes.

Objectives:

- Identify and improve quality measures prior to the patient triggering on the Minimum Data Set
- Understand inherent clinical crosswalks to mitigate risk
- Learn techniques to improve your Five-Star Quality Rating
- Implement strategies to improve census outcomes

Target Audience: Nursing Home Administrators, Director of Nursing, RNAC, Business Development, Admissions

*Tricia Whaley, Senior Director, Provider Relations
Complete HealthCare Resources - Eastern, Inc*

*Cheryl Scalzo, RN, Clinical Account Specialist
Real Time Medical Systems*

PACAH 2021 FALL VENDOR SHOW & LUNCH

Carlisle/York/Lebanon Ballroom

11:30 a.m. - 1:30 p.m.

BREAKOUT SESSION - MCO PANEL”

Delaware/Juniata Ballroom

1:45 - 2:45 p.m.

NHA – 1

RC/AL - 1

RN – 1

CPE - 1

CBDM - 1

Join representatives from the three Managed Care Organizations (MCOs) involved in Community HealthChoices (CHC). This interactive session will allow for the MCOs to answer frequently asked questions as well as respond to attendee comments and questions on anything related to CHC. The MCOs will also provide any necessary updates and program information to attendees as well as other information that will help attendees plan for or adjust to ongoing implementation of managed care in Pennsylvania.

*Norris Bennis, Vice President, Legislative & Government Affairs
PA Health & Wellness*

*Jill Blessington, Manager, Ancillary Contracting
AmeriHealth Caritas Pennsylvania*

*Andrea M. Farrell, Director, Ancillary and LTSS Network Management
UPMC Health Plan/UPMC Community HealthChoices*

Moderator: Chase Cannon, Executive Director, PACAH

BREAKOUT SESSION - “THE DATA OF WOUND CARE IN THE NURSING HOME”

Susquehanna/Allegheny Ballroom

1:45 - 2:45 p.m.

NHA – 1

RC/AL - 1

PC - 1

RN – 1

CBDM - 1

Wound-care presents unique regulatory risks in the nursing home market. Nursing home administrators have reacted by implementing Quality Assurance and Performance Improvement (QAPI) systems to mitigate these risks. These QAPI generally focus on the micro-trends in that single nursing home, or in homes in their corporate unit. However, there exists a growing body of both national and state-level data that can strengthen QAPI and risk-management.

Nursing home administrators need to understand the trends in this data to build robust QAPI and risk-management related to wound-care.

This presentation will provide national data related to wound-care that will aid nursing home administrators in understanding the nature and scope of regulatory risks of wound-care in the nursing home market. Nursing home administrators need to understand the trends in this data to build robust QAPI and risk-management related to wound-care.

Objectives:

- Define the regulatory risks related to wound care in the nursing home market
- Define the wound-care datasets related to wound care in the nursing home market
- Discuss the wound-care data on a national and Pennsylvania nursing home market
- Explore the emerging trends in the wound-care data in the Pennsylvania nursing home market
- Identify the key risks in the wound-care data in the Pennsylvania nursing home market
- Suggest risk mitigation strategies for wound care in the Pennsylvania nursing home market

*Zwelithini Tunyiswa, Chief Marketing Officer
Wound Healing Solutions*

OPPORTUNITY'S KNOCKING



MEMBER BENEFITS

- Access to the PACAH Listserv and PACAH Newsletter
- Receipt of PACAH informational and educational emails
- Sponsorship opportunities at PACAH conferences
- Advertising space in PACAH's conference programs
- Discounted rates at our semi-annual vendor shows
- The ability to sit on PACAH committees
- Acknowledgement of your business as a partner of PACAH on our website
- Networking opportunities in a close-knit environment

GROW YOUR BUSINESS - JOIN TODAY!



CONTACT

Chase Cannon
Executive Director
ccannon@pacounties.org
(717) 736-4732

Kim Deline
Meeting & Marketing Manager
kdeline@pacounties.org
(717) 736-4741

www.pacahpa.org

PACAH 2021 FALL CONFERENCE SPEAKERS

**Lisa A. Beck, MS, CCC, SLP
Clinical Director**

AdvantageCare Rehabilitation, LLC
5035 Clairton Blvd.
Pittsburgh, PA 15236
(724) 840-4843
lbeck@feeltheadvantage.com

**Norris Bennis
VP, Legislative & Government Affairs**

PA Health & Wellness
300 Corporate Center Dr.
Camp Hill, PA 17011
Norris.E.Bennis@PAHealthWellness.com

**Jill Blessington
Manager, Ancillary Contracting**

AmeriHealth Caritas Pennsylvania
8040 Carlson Rd., Ste. 500
Harrisburg, PA 17112
(717) 651-3540
jblessington@amerihealthcaritaspa.com

**Roseann Lynn Brenner, Esq.
Member**

Goldfein and Joseph, P.C.
1880 J. F. Kennedy Blvd., 20th Fl.
Philadelphia, PA 19103
(215) 979-8200
rbrenner@goldfeinlaw.com

**Nora Gieg Chatha, Esq.
Shareholder**

Tucker Arensberg Attorneys
1500 One PPG Place, Ste. 1500
Pittsburgh, PA 15222
(412) 594-3940
nchatha@tuckerlaw.com

**Jennifer Bittel Derby, Esq.
Associate**

Tucker Arensberg Attorneys
1500 One PPG Place, Ste. 1500
Pittsburgh, PA 15222
(412) 594-3936
jderby@tuckerlaw.com

**Andrea M. Farrell
Director, Ancillary and LTSS Network
Management**

UPMC Health Plan
U.S. Steel Tower - 14th Fl., 600 Grant St.
Pittsburgh, PA 15219
(412) 454-5685
farrellam2@upmc.edu

**Benjamin J. Glatfelter, Esq.
Shareholder**

Kennedy, PC Law Offices
1607 North Second St.
Harrisburg, PA 17102
(877) 833-7100
bglatfelter@kennedy.pc.net

**Cynthia A. Haines, Esq.
Principal & Co-Chair, Information
Privacy & Security Practice Group**

Post & Schell, P.C.
17 N. Second St.
Harrisburg, PA 17101
(717) 612-6051
chaines@postschell.com

**Angela M. Huffman, RN, WCC
Vice President of Clinical Services**

Affinity Health Services, Inc.
942 Philadelphia St.
Indiana, PA 15701
(724) 463-1010
ahuffman@affinityhealthservices.net

**Christopher E. Joseph, CPA, CISA,
CRISC, CITP**

Parter - Consulting Services
Arnett Carbis Toothman, LLP
P.O. Box 2629
Charleston, WV 25329
(304) 346-0441
Chris.Joseph@actcpas.com

**Nick Kaintz, P.E., LEED AP BD+C
Vice President**

Snyder Hoffman Associates
1005 W Lehigh St.
Bethlehem, PA 18018
(610) 694-8020
nkaintz@snyderhoffman.com

**John N. Kennedy, Esq.
Founder, President & CEO**

Kennedy, PC Law Offices
1607 North Second St.
Harrisburg, PA 17102
(877) 833-7100
JKennedy@kennedy.pc.net

**Heather Meadows, CCC/SLP/CDP
Executive Director of PA**

Premier Therapy, LLC
110 Central Square Dr.
Beaver Falls, PA 15010
(724) 775-8669
HMeadows@embracepremier.com

**Paula G. Sanders, Esq.
Principal & Co-Chair, Health Care
Practice, Chair, COVID-19 Task Force**

Post & Schell, P.C.
17 N. Second St.
Harrisburg, PA 17101
(717) 612-6027
psanders@postschell.com

**Cheryl Scalzo, RN
Clinical Account Specialist**

Real Time Medical Systems
785 Elkridge Landing Rd., Ste 300
Linthicum Heights, MD 21090
(570) 237-7093
cscalzo@realtimed.com

**Charles Schlegel
Director, Division of Safety Inspection**
Pennsylvania Department of Health

**Elizabeth A. Syer-Ashmore, Esq.
Member**

Goldfein and Joseph, P.C.
1880 J. F. Kennedy Blvd., 20th Fl.
Philadelphia, PA 19103
(215) 979-8200
esyer@goldfeinlaw.com

**Casey L. Slotter, Esq.
Associate**

Kennedy, PC Law Offices
911 Washington Ave.
Carnegie, PA 15106
(877) 833-7100
CSlotter@kennedy.pc.net

**Kelly Swanson
kelly@kellyswanson.net**

**Zwelithini Tunyiswa
Chief Marketing Officer**

Wound Healing Solutions
600 Clements Bridge Rd.
Barrington, NJ 08007
(856) 547-8000
zveli@wounds.us

PACAH 2021 FALL CONFERENCE SPEAKERS

Tricia Whaley

Senior Director, Provider Relations

Complete HealthCare Resources -
Eastern, Inc.

200 Dryden Rd., Ste. 3100

Dresher, PA 19025

(267) 965-1010

twhaley@chrmail.com

Steve Wilder, BA, CHSP, STS

COO

Sorensen, Wilder & Associates

185 E. North St.

Bradley, IL 60915

(815) 933-5977

swilder@swa4safety.com

Susan Williamson

**Director, Division of Nursing Care
Facilities**

Pennsylvania Department of Health

Walter Zapor, LEED AP BD+C, CSI CDT

Senior Associate

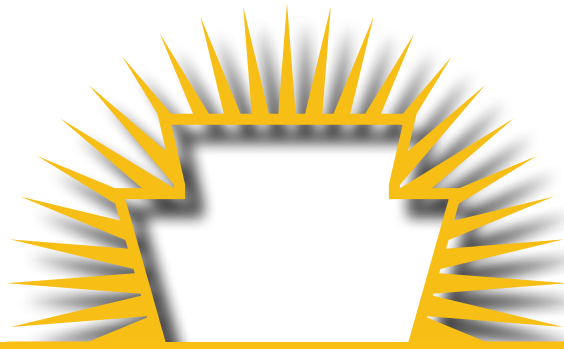
KCBA Architects

8 E. Broad St.

Hatfield, PA 19440

(215) 368-5806 x139

walter.zapor@kcba-architects.com



PACAH

Pennsylvania Coalition of Affiliated
Healthcare & Living Communities

PO Box 60769
Harrisburg, PA 17106-0769
(717) 526-1010
fax (717) 526-1020

www.pacahpa.org



www.facebook.com/pacahpa



www.linkedin.com/company/pacah



www.twitter.com/PACAHPa