

**Breakout Session –
CREATING A CUSTOMIZED VERSION OF THE
'HOUSEHOLD MODEL' AT YOUR FACILITY**

CREATING A CUSTOMIZED VERSION OF THE 'HOUSEHOLD MODEL' AT YOUR FACILITY



- Thomas Grden AIA Principal
- Tracey Graham RN MSN, MSM, CEN NP-C, DNP Senior
Healthcare Strategist
- Renz Weinmann AIA LEED AP BD&C, Associate

A bit about us...

Stantec is a global multi-disciplinary and integrated consulting practice...



offering a full spectrum of design
and program management services
to clients across the globe.

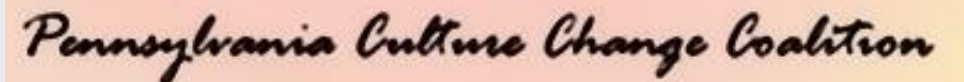


We are architects, engineers, planners, interior designers, and landscape architects.

“Senior Living” is a specialized subsector within Stantec’s Healthcare Design practice.

We are dedicated to enabling our clients to deliver person-centered care.

And we are invested in all that we do.



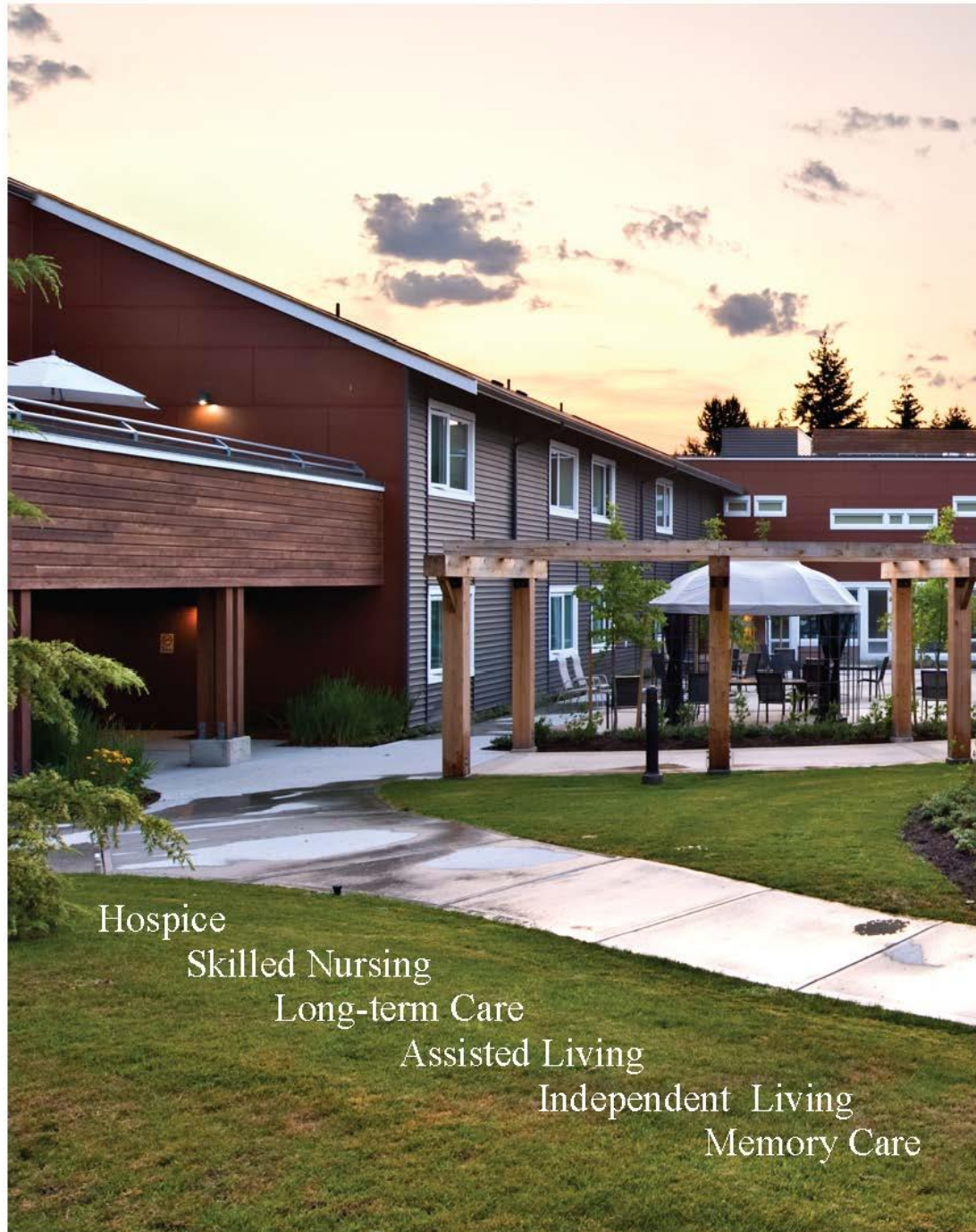


This session will explore ways to create households under difficult circumstances



...will bring new ideas from other cultures and housing types, exploring the social unit that is the household itself.

- and how you can customize it



Hospice
Skilled Nursing
Long-term Care
Assisted Living
Independent Living
Memory Care

Objectives:

1. Understand what a 'household' really is
2. Gain ideas from other approaches to housing and care
3. Practical Considerations
 - Household size
 - Bed and Bath Ideas
 - Household Layouts
4. Application and Compromise:

Creating your own version of the Household Model

Understanding what a household really is



Place?

People?

Both?



Understanding what a household really is

Simple definition:

“A **household** is composed of one or more people who occupy a housing unit.”

~ The Population Reference Bureau”

People are not statistics



Understanding what a household really is

So what is a household?

Ideas?



Understanding what a household really is

Examples:

Social groups

Clubs

Clans



Understanding what a household really is

A social unit:

Relational. Interactive.

Having a commonality.

Even friendship.



Understanding what a household really is

A group identity

We talk about being 'members of a household'.

“Household” implies membership.

Inclusion. Belonging.



Understanding what a household really is

A physical place

Identifiable. Familiar. Safe.

A place and a room to call your own.



Gathering ideas from other places



Lessons Learned

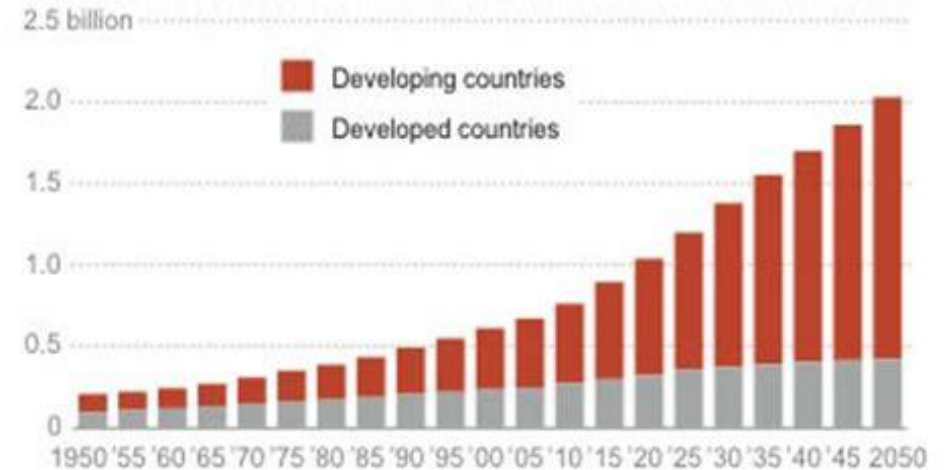
We are all caring for seniors

- In different / alternate facilities
- With different models of care
- With different Religions & Cultures
- With different resources
- With different funding models



Global rise in aging population

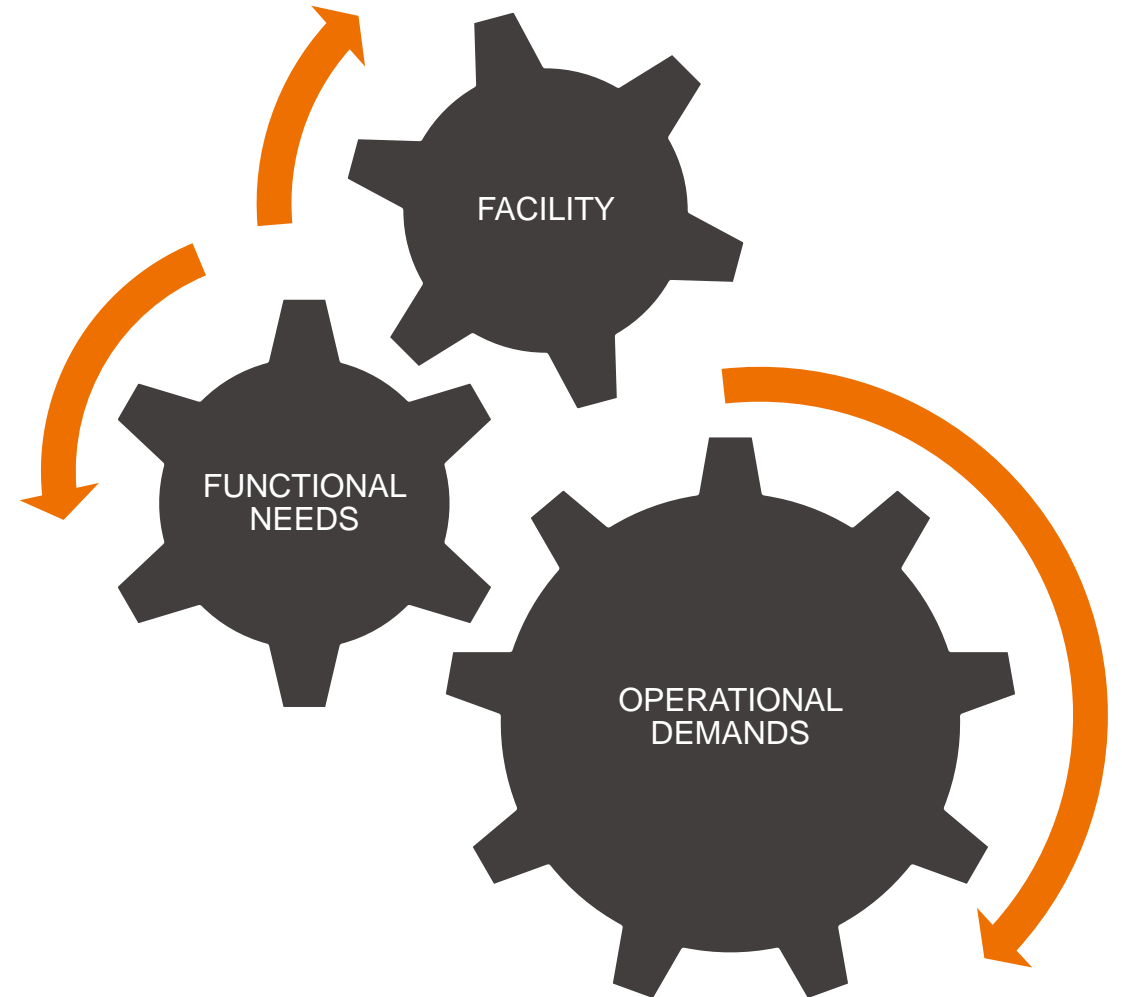
The number of people in the world aged 60 and older is expected to grow past 2 billion by the year 2050.



SOURCE: United Nations Population Fund

AP

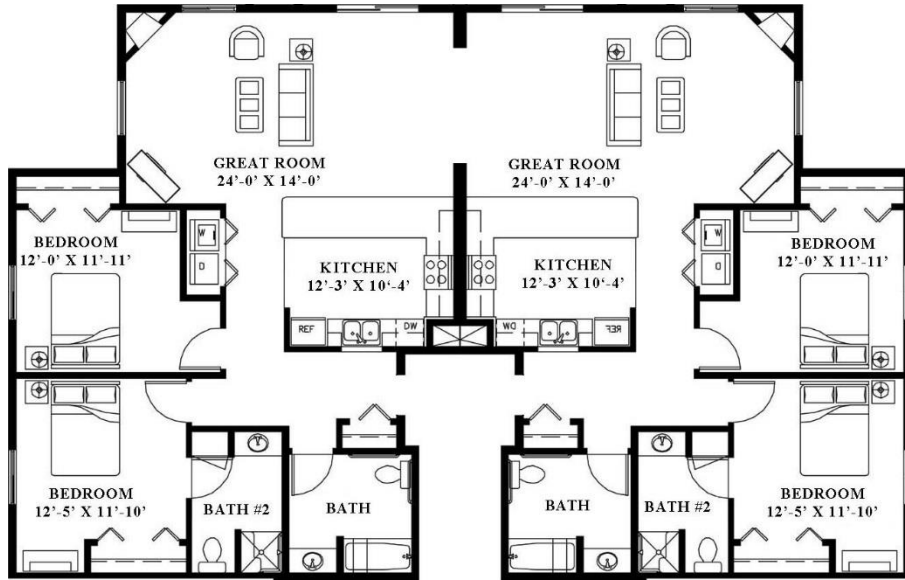
Application of Household Definition to Design



Functional & Operational Considerations



Different / Alternative living arrangements



- Home Instead
- Dormitories
- Domiciliaries



- Communal Living and Co-Housing
- The British 'Collective'
- Fraternities

Gathering ideas from other places



Copyright © The Collective Partners LLP
2015. All Rights Reserved

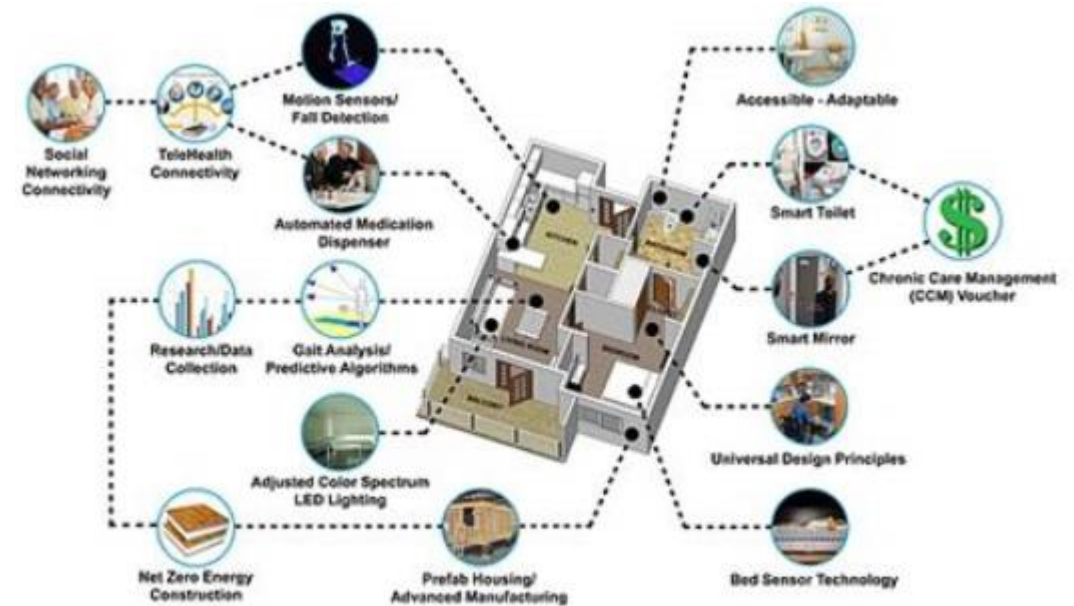
THE COLLECTIVE “A NEW WAY TO LIVE IN LONDON”

“Introducing The Collective Old Oak, the world’s largest co-living building in London. Featuring well-designed apartments, shared living spaces and amazing facilities inside a thriving community of over 500”

“We design and build homes and workspaces designed to be the perfect platforms for life...”

Examples of Care Facilities and Models of Care

- Assisted Living Model
- Neighborhood Model
- Netherlands Model (De Hogeweyk – Dementia Village)
- Small House Model
- Green House Design
- Household Model
- Community Based Primary Health Care Team Model
- Medical Home Model / PACE



Senior Living Prototype Unit



Example - European Field Study Findings

Increased freedom of movement for all residents

Greater balancing of risks with engagement in everyday life with residents, families and staff

Increased scope and responsibility of resident care aides

Greater range of senior's services offered by the organization

Adult day programs, respite, home support

Greater knowledge about the resident before they move in

A business model that allows central distribution of food and supplies from the homes "grocery" store





Example – LBHH Vancouver, BC. Canada



Home in Urban Setting – Not Home Like

Jewish Community Center Integration

Resident and Family Centric



Vertical Model

Increased scope and responsibility of resident care aides

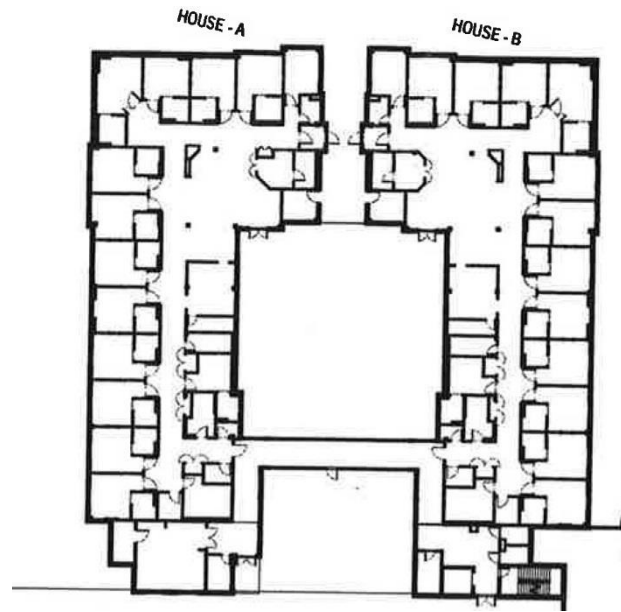
Greater range of senior's services offered by the organization

Greater knowledge about the resident before they move in



Partnerships that extended beyond Facility Walls

If the VA can do it...



Small House Model design guide

January 2017

*(Replaces the Community Living Center
Design Guide - dated June 2011)*

If the VA can do it...

2.0 FUNCTIONAL CONCEPTS

2.4. Planning and Design

(2.4.3.2 Design Language cont'd)

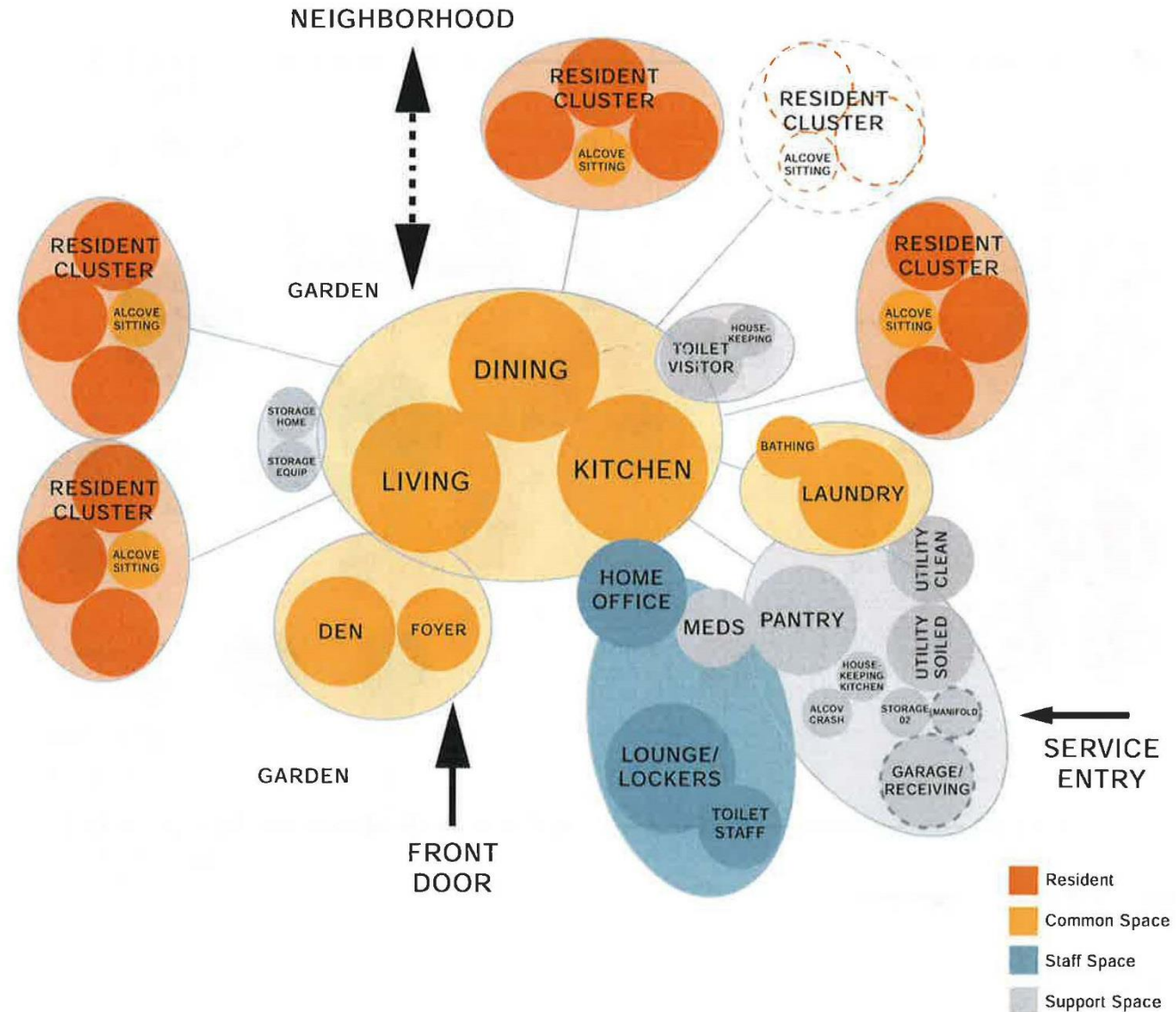
Color palettes shall be developed for Community together as a whole. The palettes developed for CLC Communities shall have an overriding theme while also providing variation to allow spaces within the community to be emphasize with different colors. Select neutral tones for some of the most permanent finishes such as flooring, doors, and casework. Accent colors can be implemented on walls, furniture, and in art, and elements that can more easily be changed. Color palettes and their implementation are to reflect the following color concepts:

- Full spectrum of color – encompassing both warm and cool tones, see Figure 2.52
- Contrast between floor and wall planes, between furniture seats and the floor to differentiate the planes from each other and assist with depth perception
- Minimize value (light to dark) contrasts between adjacent flooring, as the elderly eye may perceive this as a step or a hole

2. Textures and Patterns

Use pattern and texture to bring another level of depth, variety and visual interest to the Home design scheme, see Figure 2.52. These aspects should reinforce the residential theme. Patterns and textures can also be used functionally to help to hide soil and conceal wear. Select Patterns and Textures with consideration of the following principles:

- Use both large and small scale patterns to reinforce residential design themes
- Limit large patterns to one surface or furniture item.
- Sample large patterns in large size samples to ensure that the pattern does not produce an optic effect.
- Review smaller patterns in large size samples as they may not be visible by an aging adult eye.



If the VA can do it...

Small House Model Design Guide

January 2017

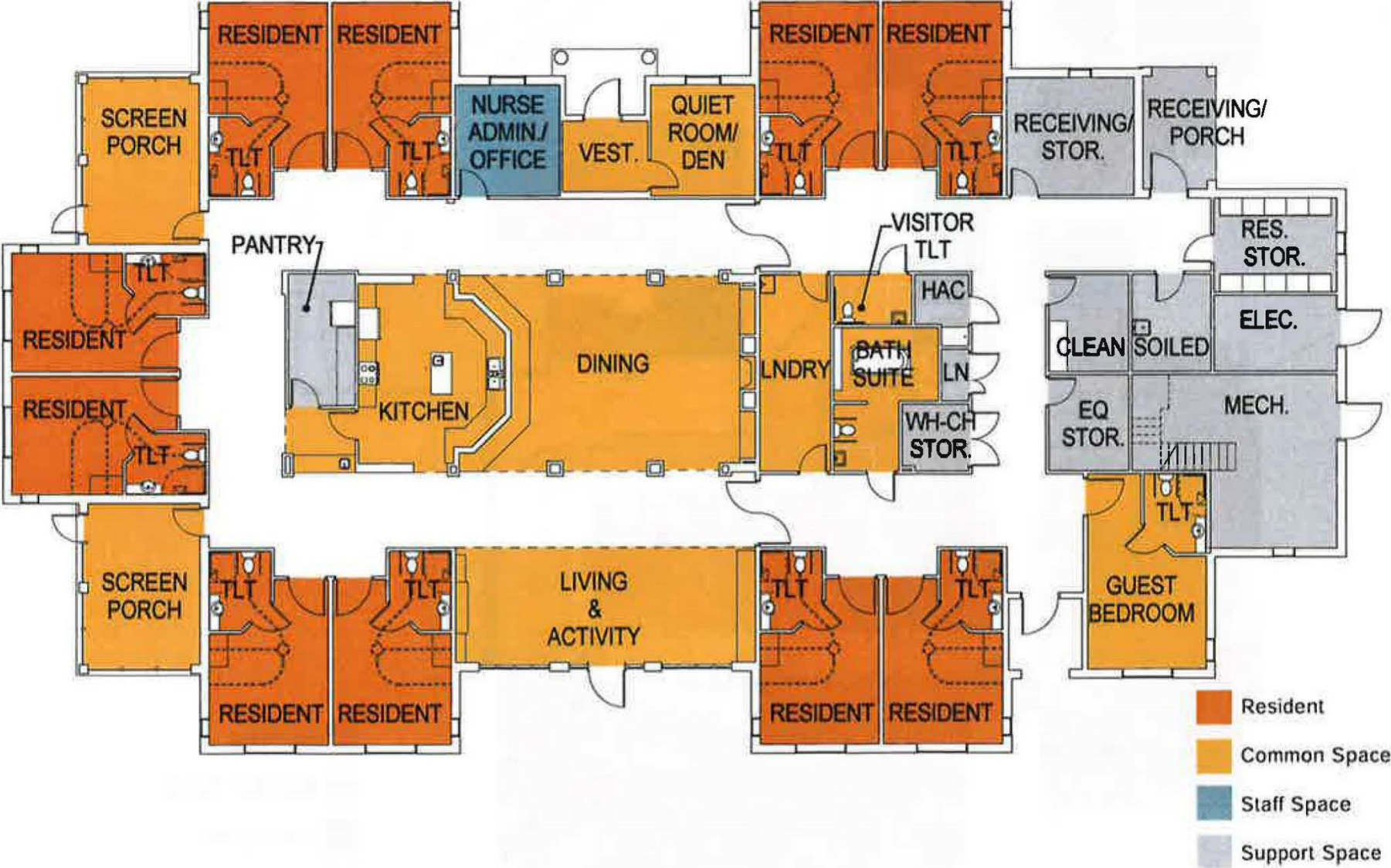
2.0 FUNCTIONAL CONCEPTS

2.2. VA Values and Goals of the CLC Program and Design Guide

(2.2.2.2 Principles of Small House Design cont'd)

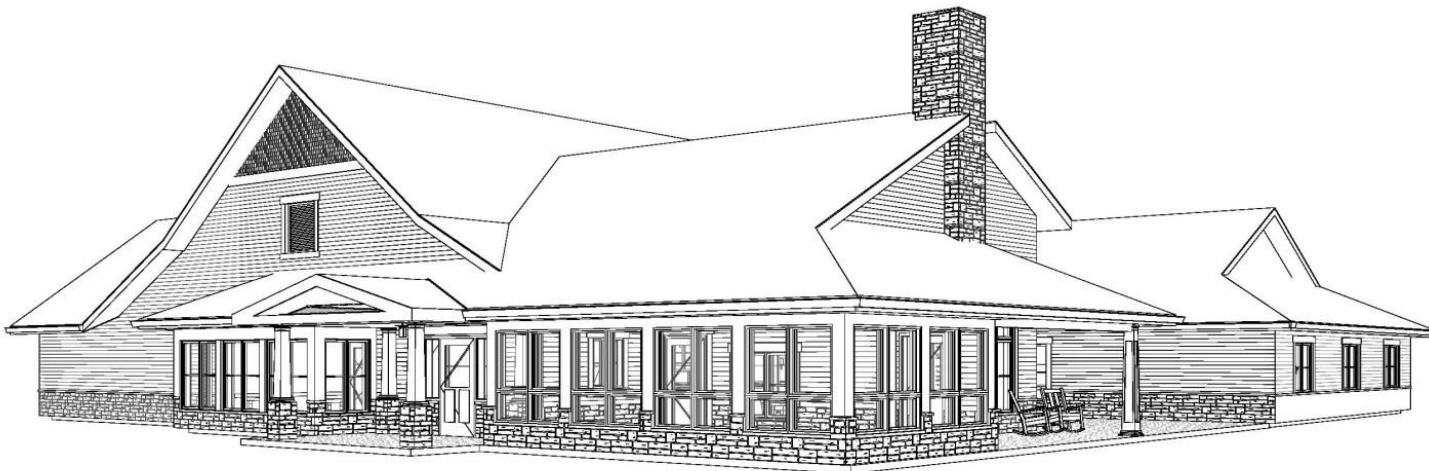
- Efficiencies related to the House and the Neighborhood include the use of common resources to limit duplications which may also serve to encourage social interaction with the residents. Examples include but are not limited to:
 - Shared access to amenities
 - Common walkways to the Community Center
 - Grouping of homes for types of care

If the VA can do it...



The Genesis of the Household Model

The Green House Model / Eden Alternative



Living *

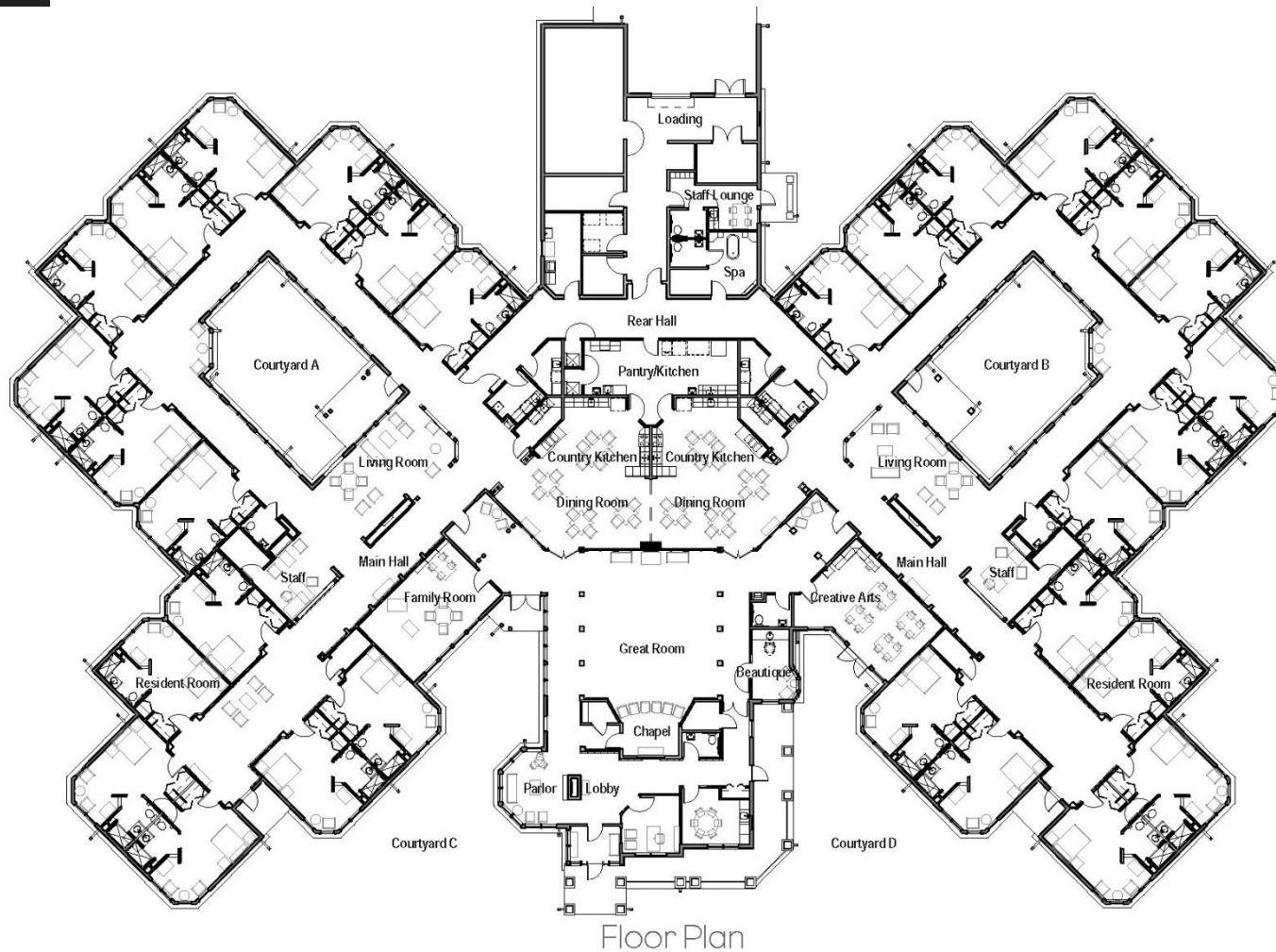
Provides a home for 10-12 people, with private room/baths, that harmonizes with the neighboring Community

Creates a real home environment with an open kitchen, great room, and easy access to the outdoors

* Excerpts from the Green House Project® website

10 – 12 Beds / Household

The Rosecrest Adaptation



Three 10-Bed Households?

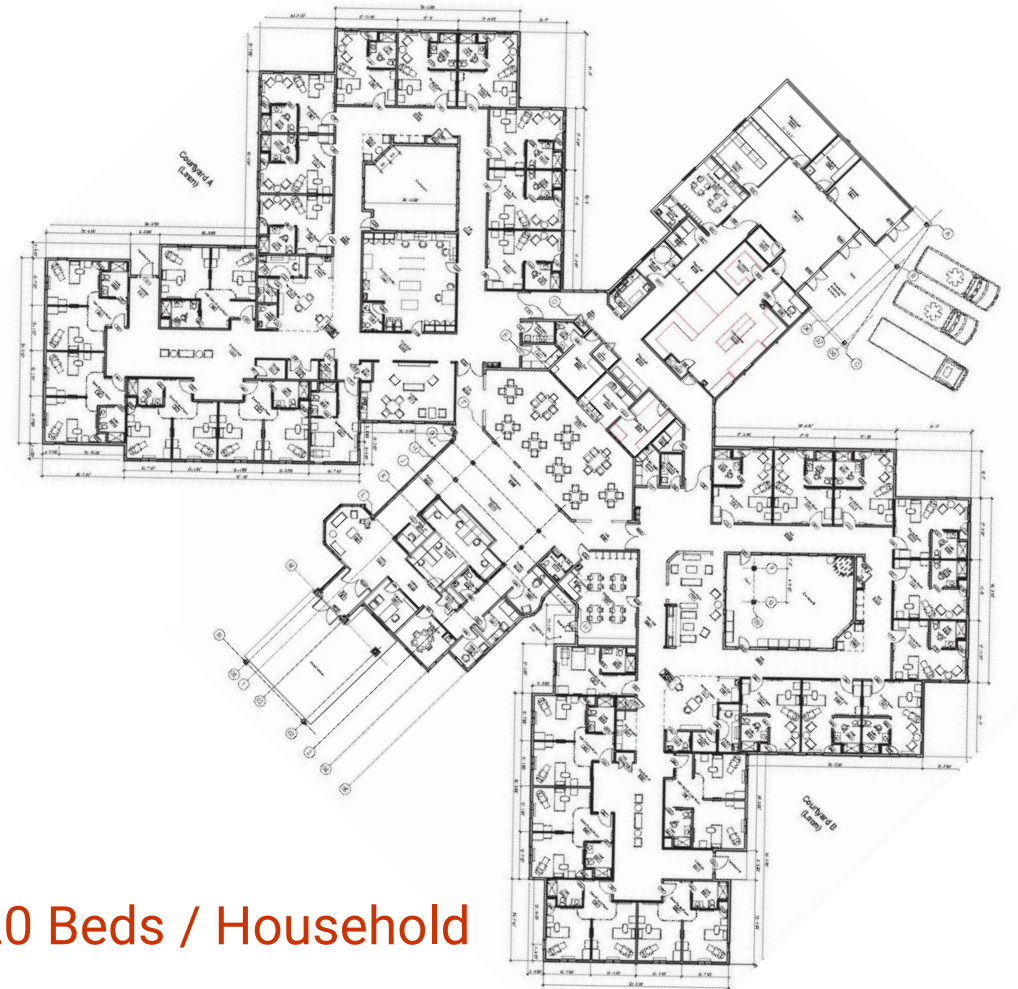
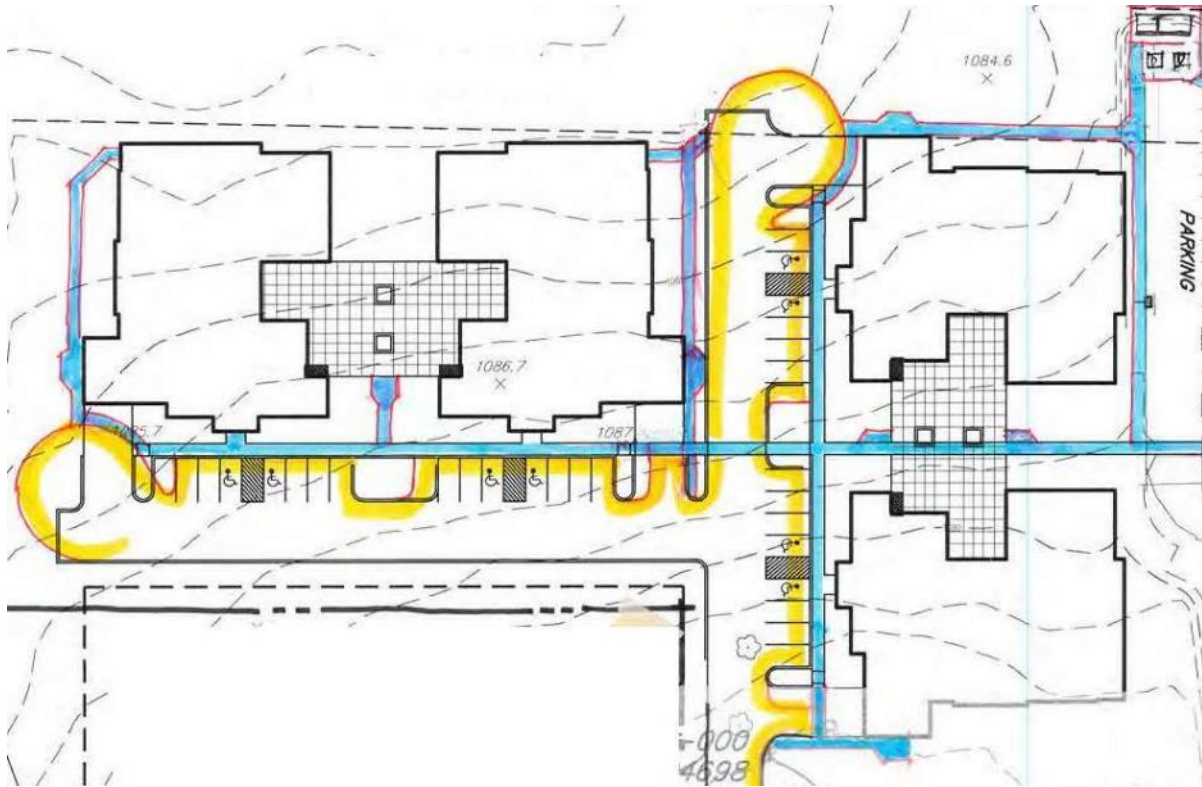
or

Two 15-Bed Households?

What issue would be the final determinant?

15 Beds / Household

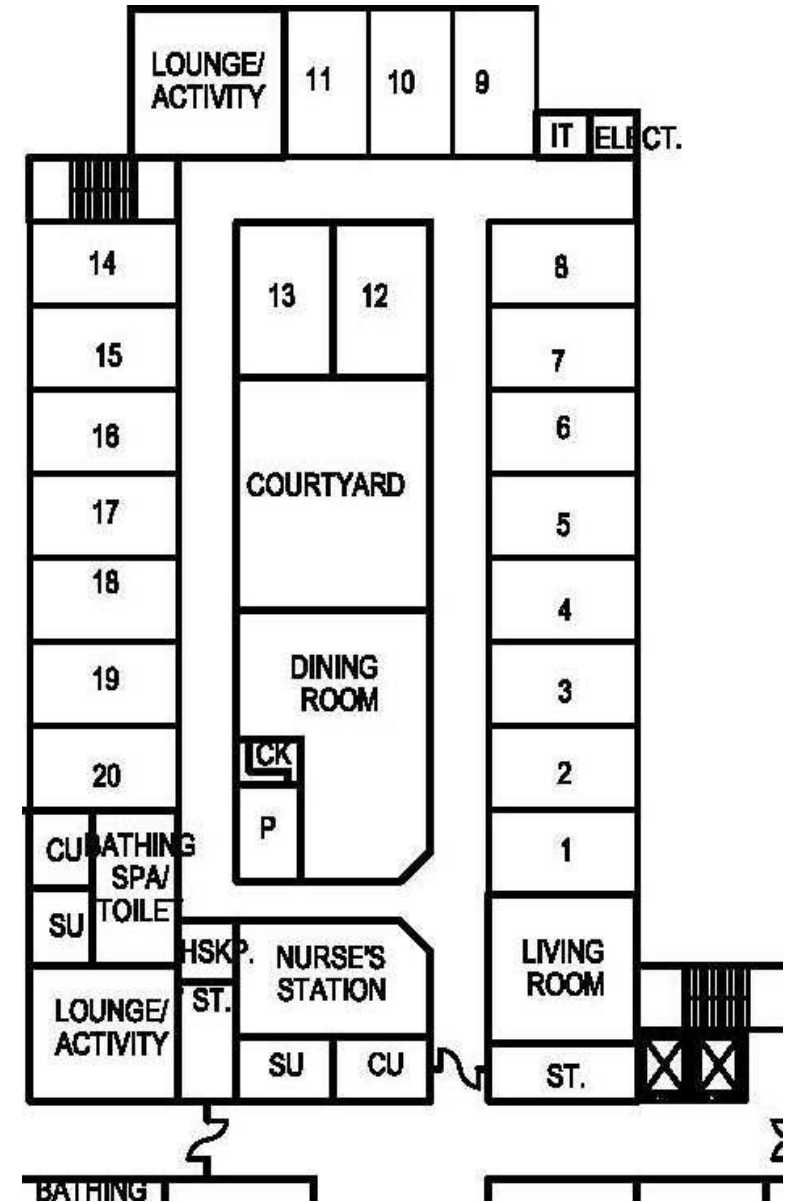
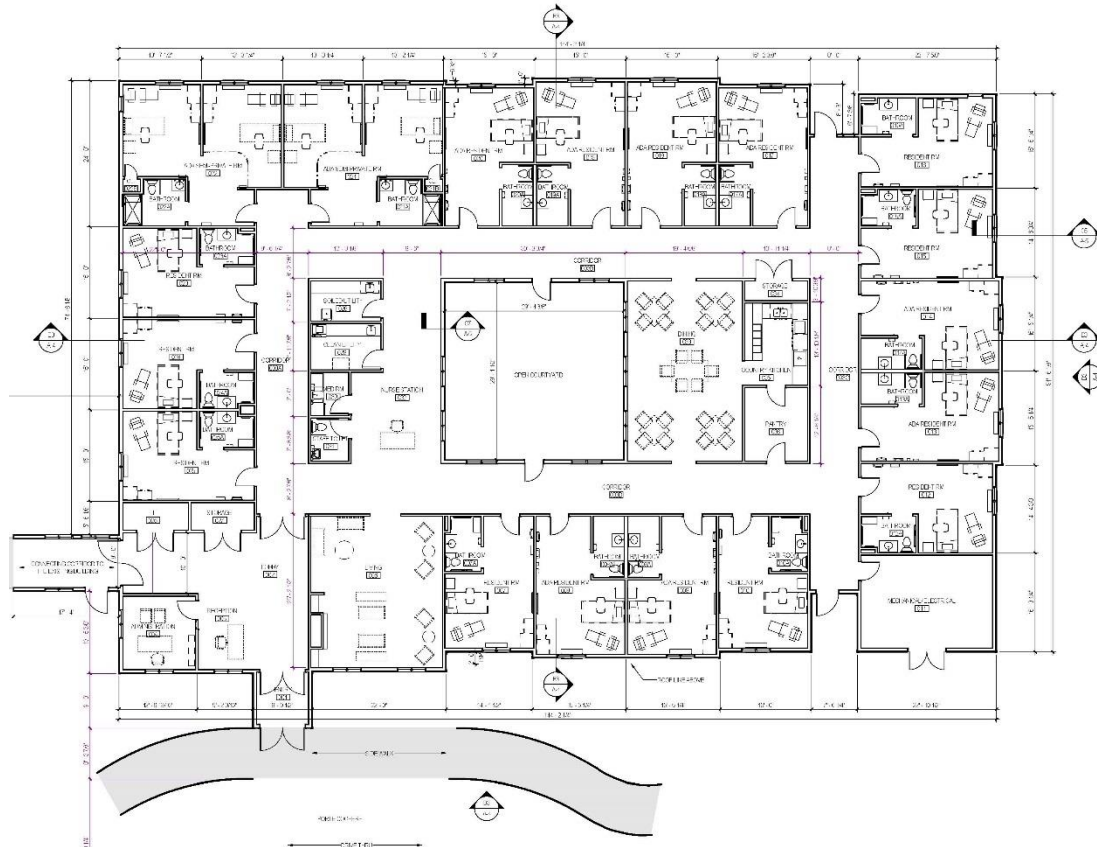
The Story of Union Crossing



20 Beds / Household

The Next Generation

- The 20 – 24 bed model



Can we “Have our Cake and Eat it too?”

The “Thirty – Something” Generation





No place like Home

- Front door
 - Sense of ownership
- Sense of place
- Privacy



Private bedroom & bathroom

- Own Space
 - Personal time
- Personal belongings
 - Pictures, paintings, furniture
- Memorabilia
 - Touchstones to memories
- Privacy



Living Room and Dining Room

- Public space
 - Watch TV, phone calls to friends
 - Gathering and socializing
- Gathering for meals
 - Meals define the time day





Kitchen

- Country Kitchens
Meal independence
- “The Heart of the Home”
Food becomes showpiece / activity





Personal belongings

- Maintains sense of home
 - Attachment to place
- Pictures, paintings, furniture
 - Emotional value
- Freedom of choice
 - Moving furniture

Personal belongings



- Maintains sense of home
 - Attachment to place
- Pictures, paintings, furniture
 - Emotional value
- Freedom of choice
 - Moving furniture



Outdoor and Location

- Outdoor spaces
 - Connection with nature and garden
- Residential scale and familiar materials
- Proximity and access to shopping
 - Small purchases

CASE STUDY:

Nursing home – 1977 / 1993



Nursing home - 1977

28 Bed Skilled Nursing Wing
28 Bed Intermediate Wing

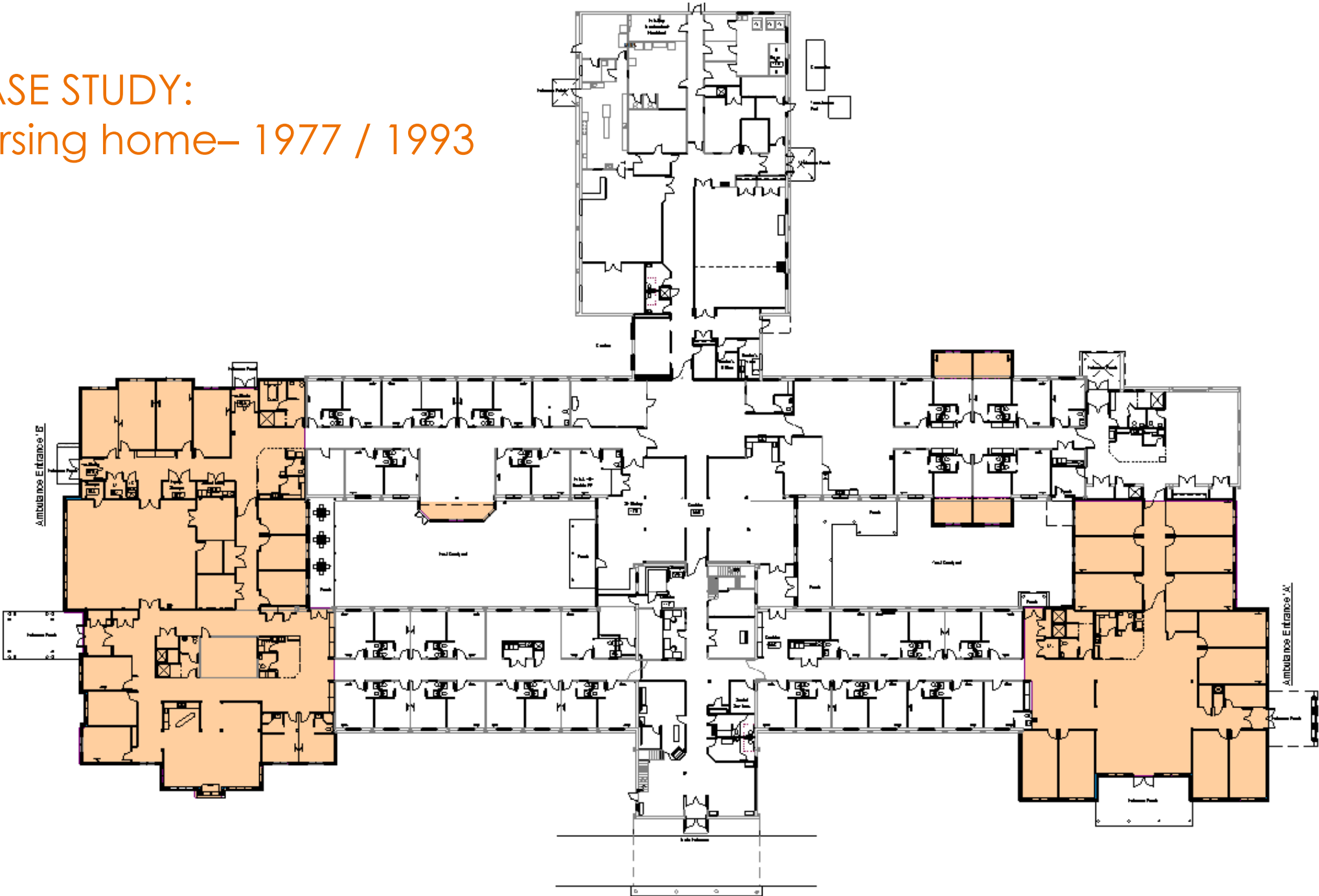


Nursing home - 1993

Addition:

30 Bed Memory Care Wing
24 Bed Sub-Acute Wing
Total beds = 100+ beds

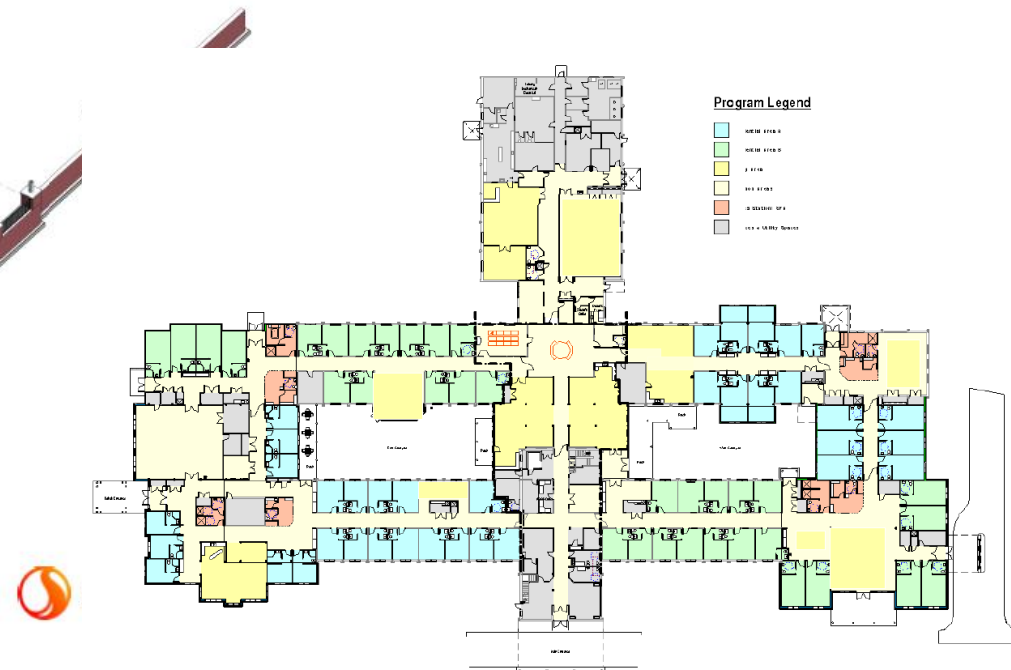
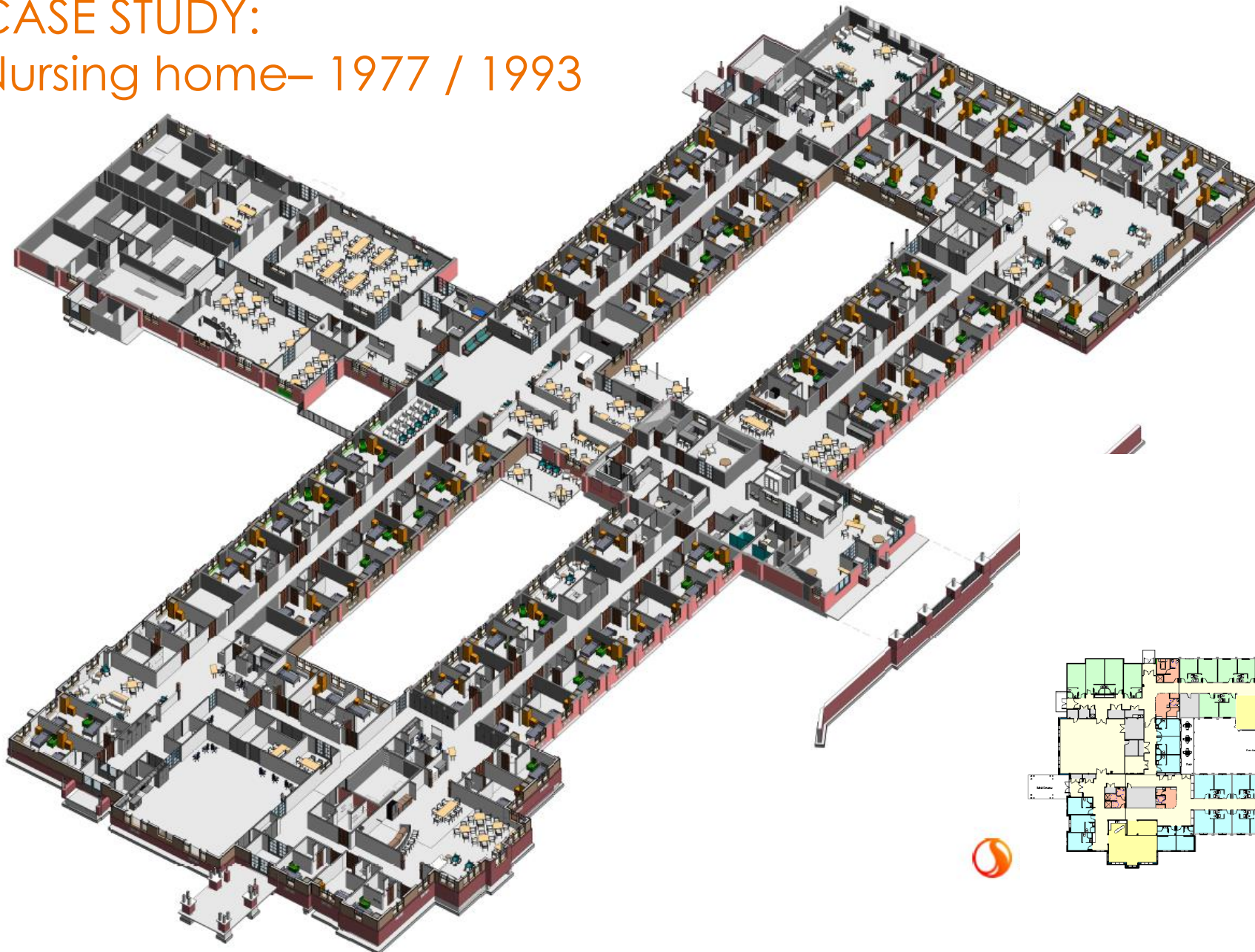
CASE STUDY:
Nursing home– 1977 / 1993



CASE STUDY:
Nursing home



CASE STUDY: Nursing home– 1977 / 1993

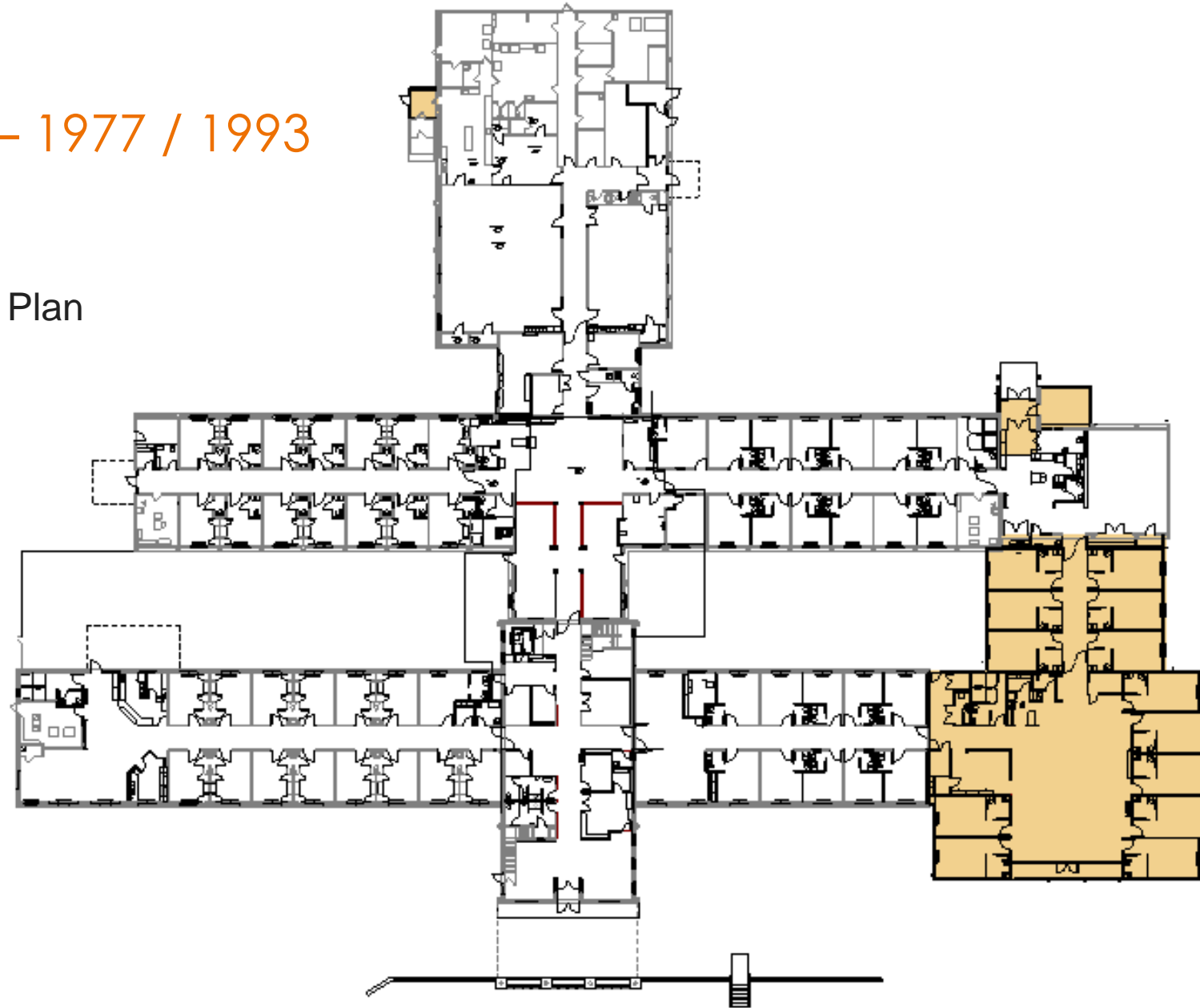


Program Legend

Light Blue	10000-11000
Light Green	12000-13000
Yellow	14000-15000
Light Orange	16000-17000
Light Grey	18000-19000

CASE STUDY: Nursing home— 1977 / 1993

Compromises to the Plan



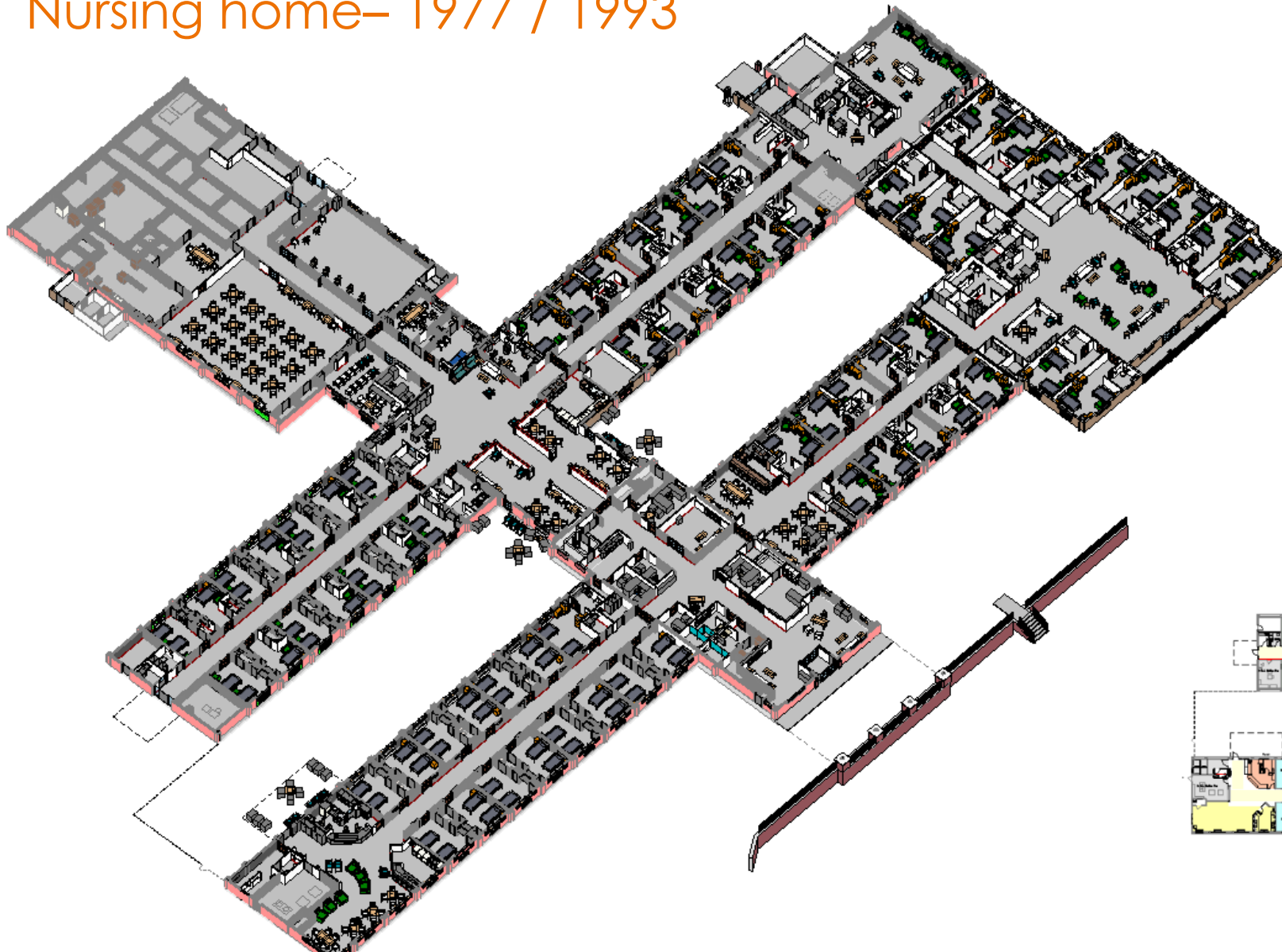
CASE STUDY:
Nursing home– 1977 / 1993



Compromises to the Image



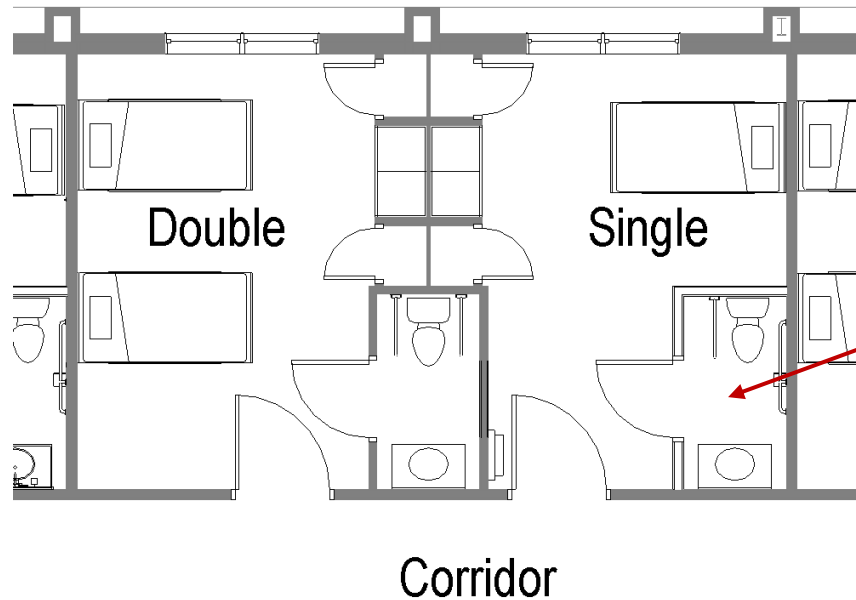
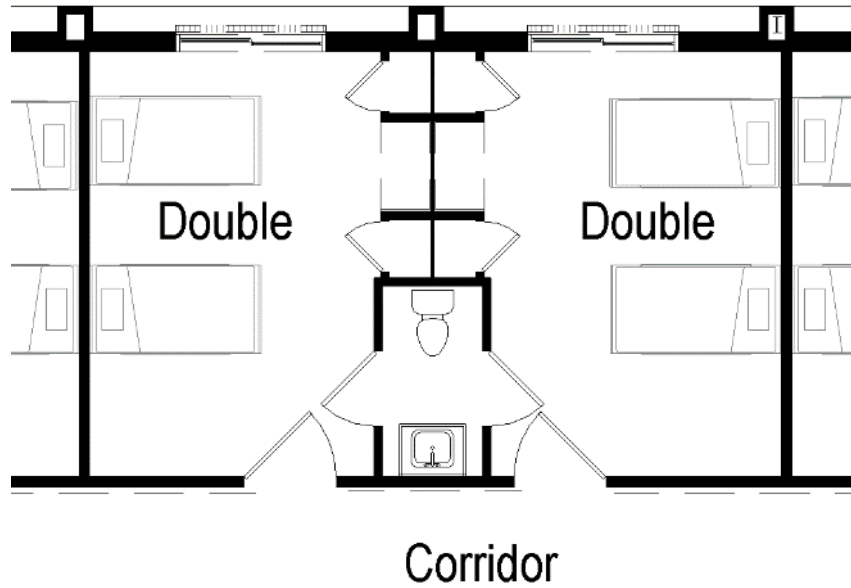
CASE STUDY: Nursing home— 1977 / 1993



Private & Semi-Private

OPTION 1

- Semi-Private rooms with shared bathrooms (A fairly common room type)

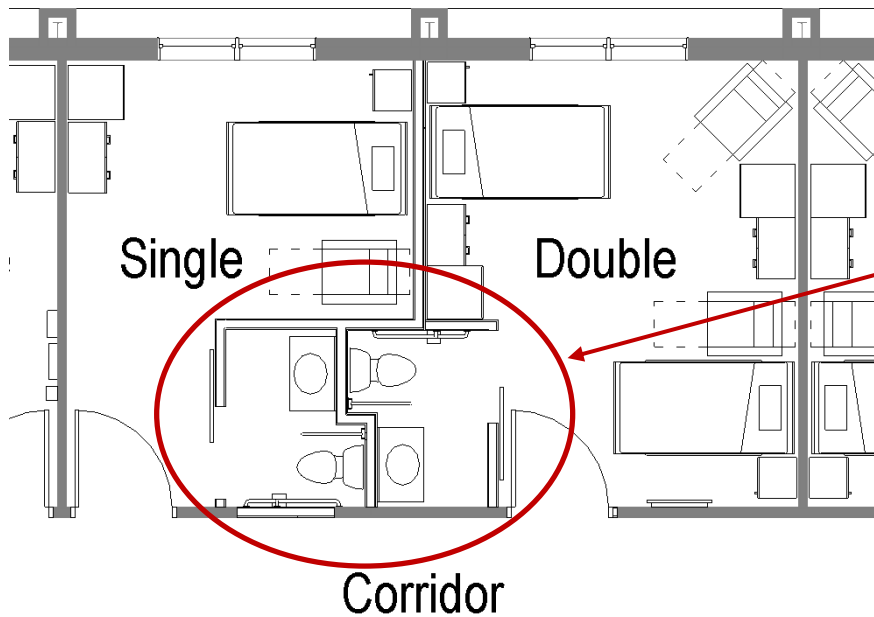
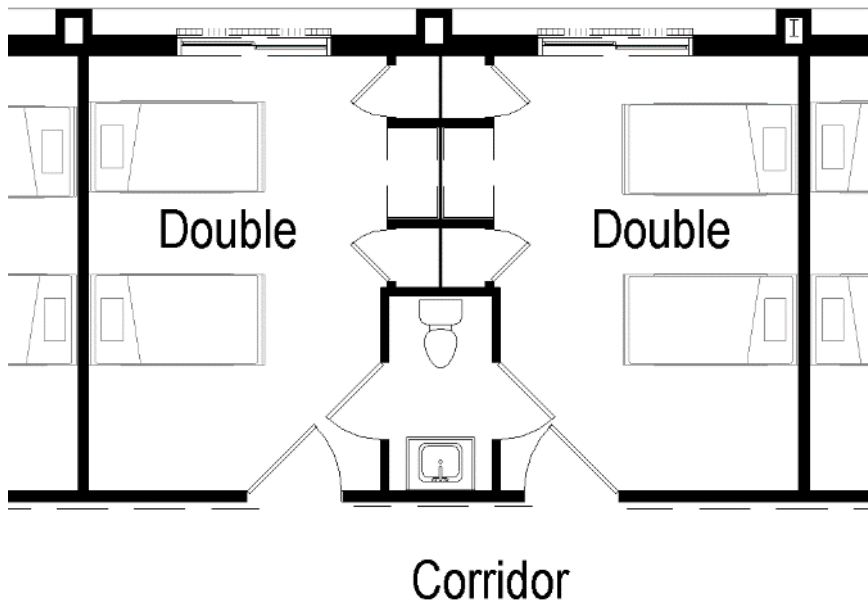


Create Private Rooms by adding a bathroom and dedicating the existing bathroom to the Semi-Private

Private & Semi-Private

OPTION 2

- Reduce Semi-Private rooms with shared bathrooms

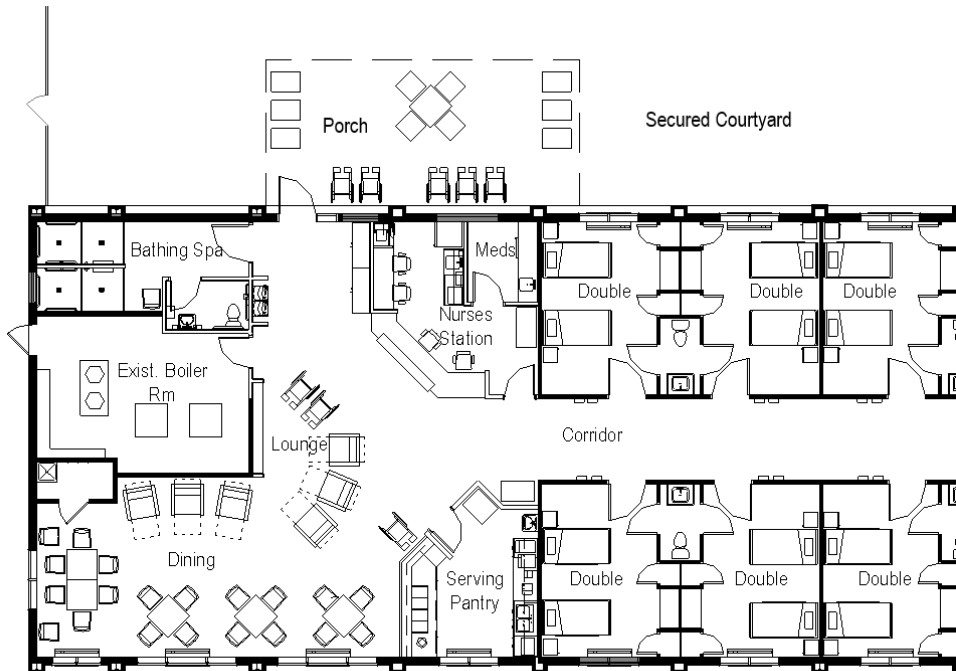
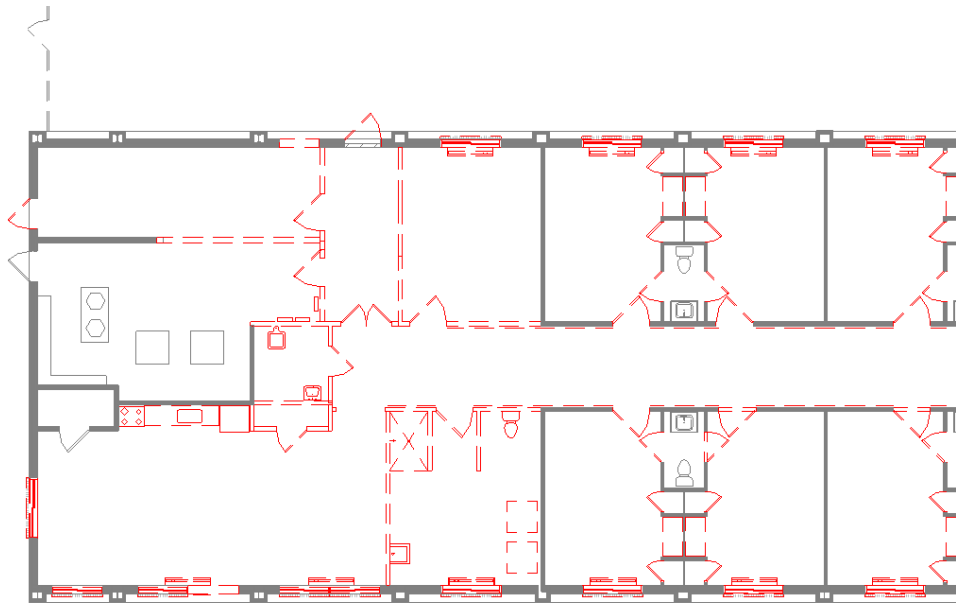


Create Private Rooms and redesign the bathrooms

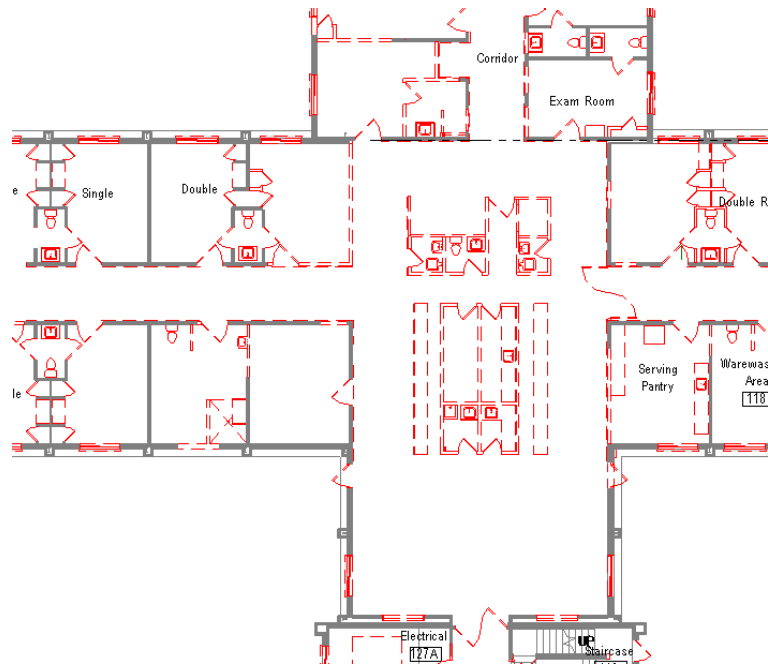
Memory Care

- Isolated dining area

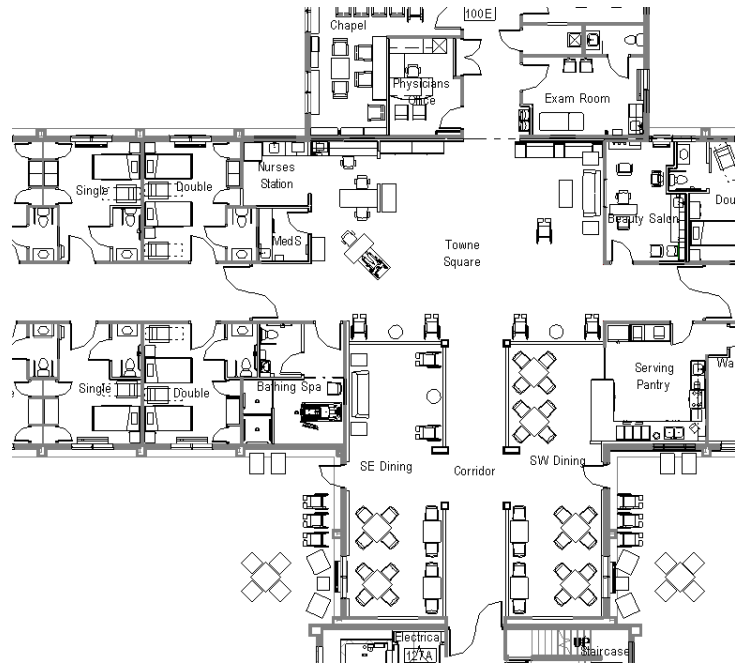
- Centralizing functions for better oversight



Staff Interaction & Oversight



- Nurses Stations remote from Activity areas

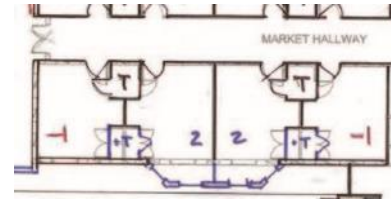


- Locating Nurses Station in close proximity to Dining and Lounge areas

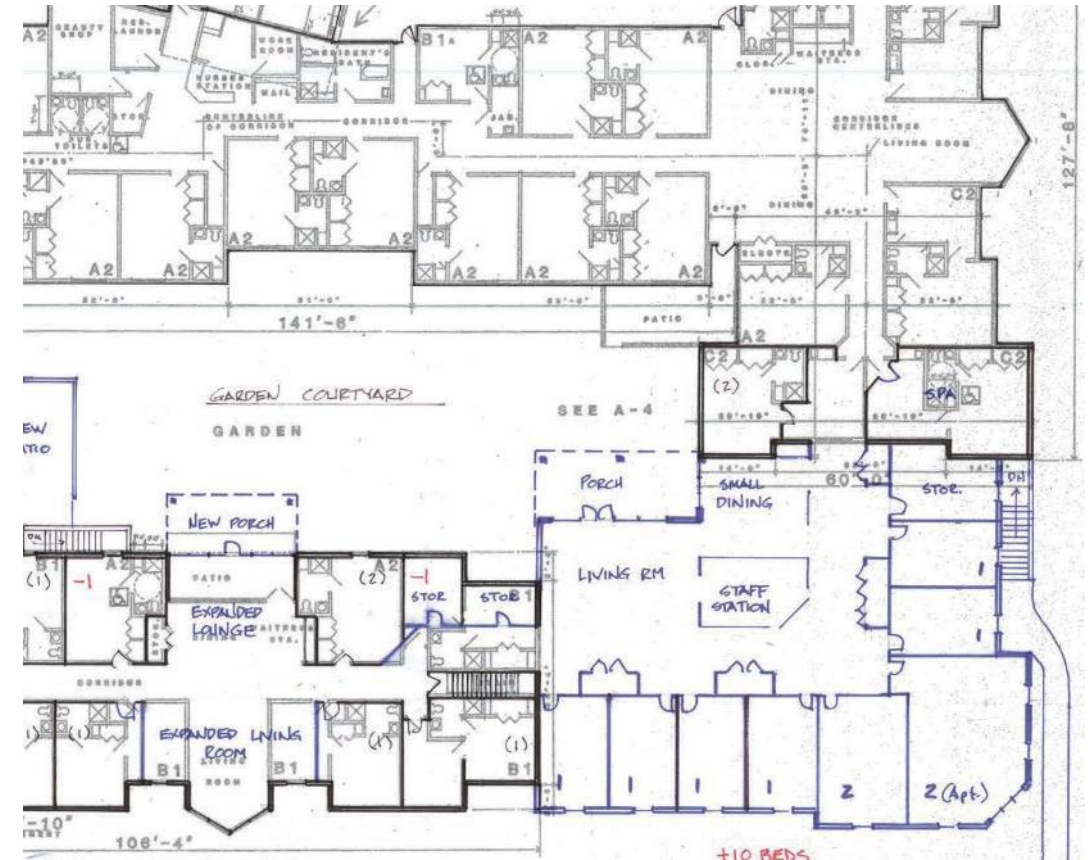
More Ideas



Create a Great Room



Just add a Bay



A Corner Addition that also Creates a Courtyard

More Ideas

- Adds Private Rooms
- Circulation Efficiency
- Creates secure Courtyards
- Provides an Attractive New Facade



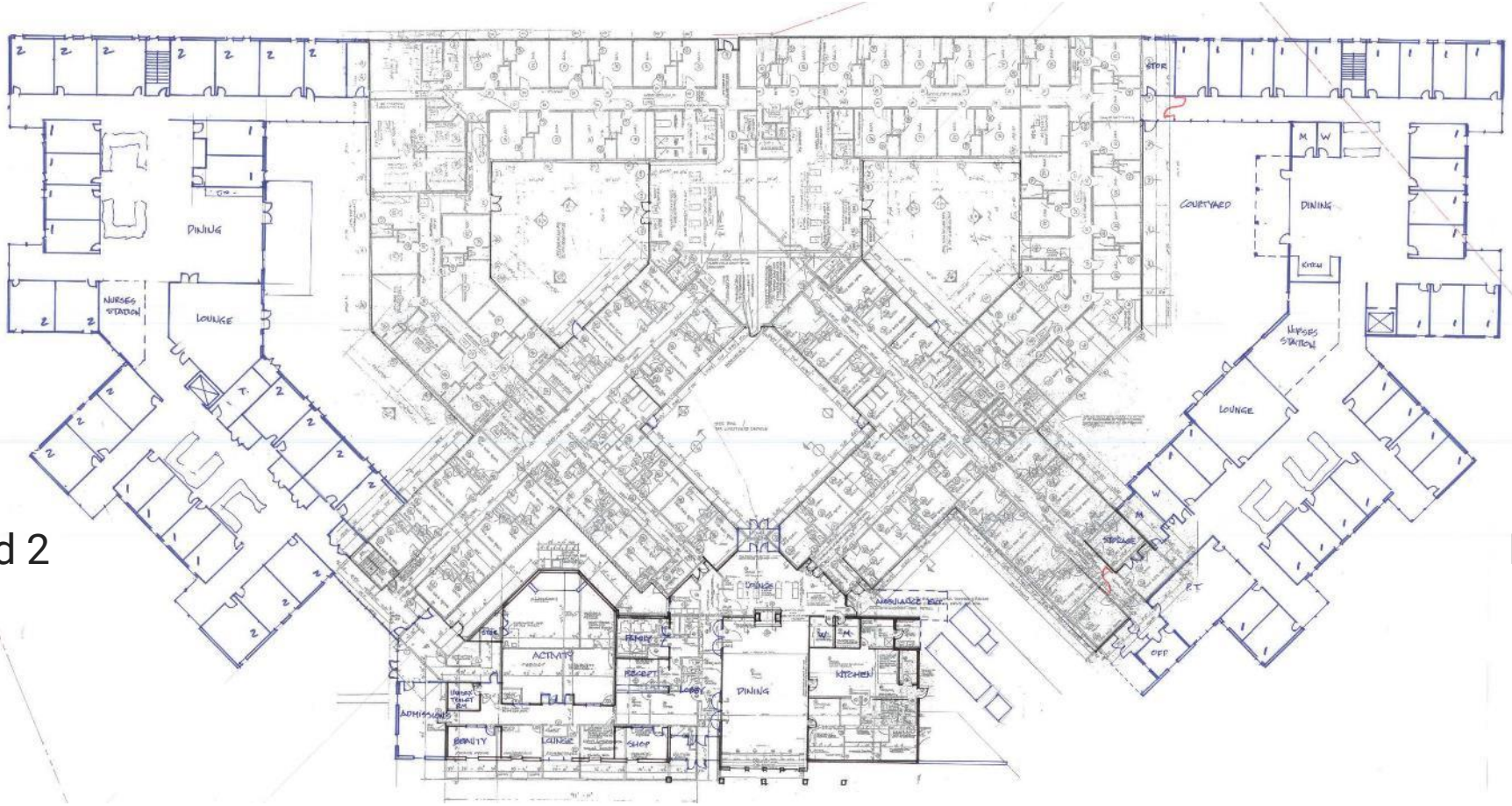
More Ideas: Just Create What You Need

New Household 1

New Household 3

New Household 2

New Household 4





EPILOGUE: The Rosecrest Model Revisited

Lessons Learned:

The “Household” concept was modified to suite the care and staffing model.

EPILOGUE 2: Nursing Home 1977 / 1993

Lessons Learned:

The “Household” concept was modified to suite the owner’s budget.

In Both Cases:

Compromising on the original conception still resulted in a great solution

If we always do what we've always
done we'll always get what we
always got.

Henry Ford (abridged)
1863 - 1947



Without change there is no innovation, **creativity**, or incentive for improvement. Those who initiate change will have a better opportunity to manage the change that is inevitable.

William Pollard

The culture of aging has changed, and with it must change both care attitudes and living environments.





Without change there is no innovation, **creativity**, or incentive for improvement. Those who initiate change will have a better opportunity to manage the change that is inevitable.

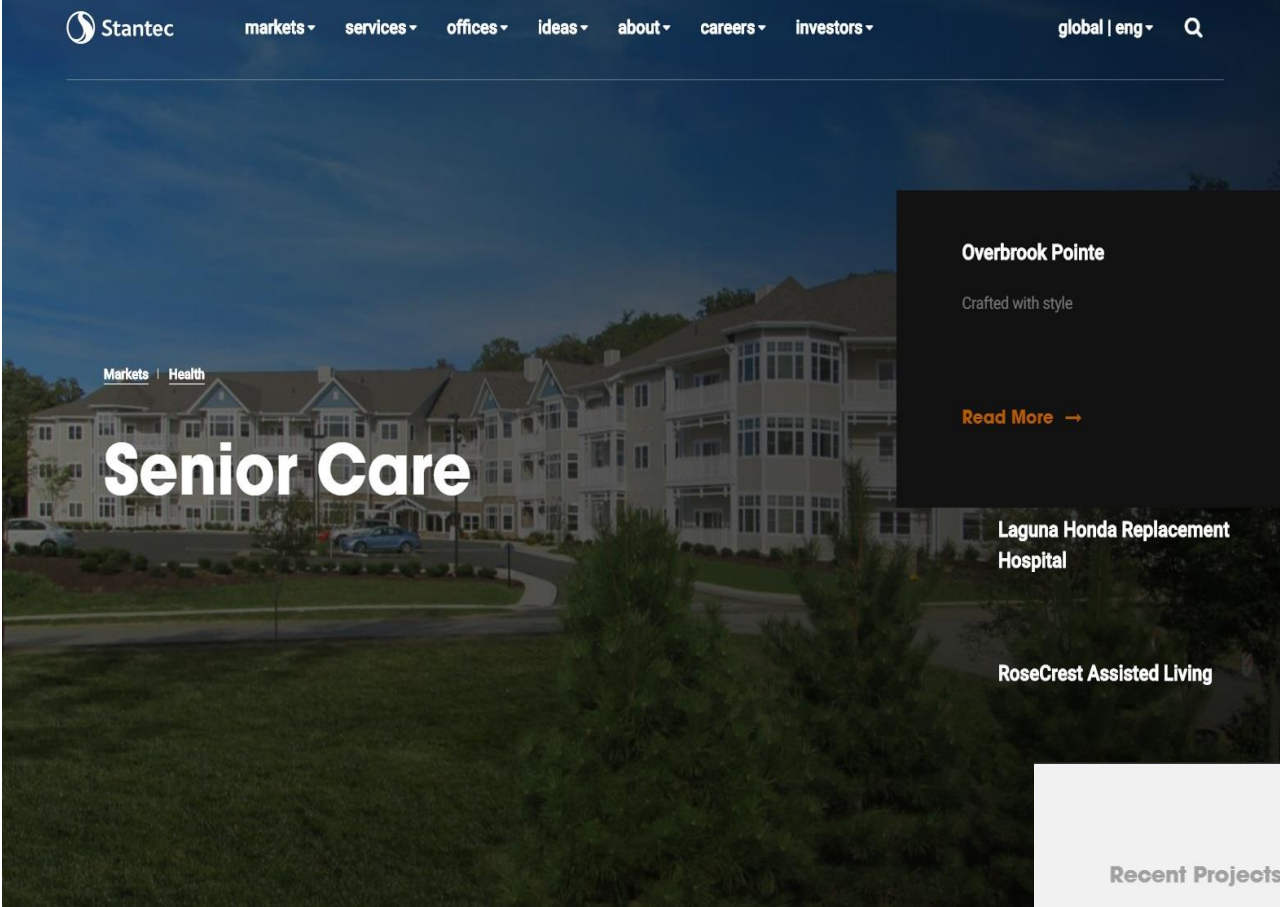
William Pollard

The culture of aging has changed, and with it must change both care attitudes and living environments.



“We thank you”





Markets | Health

Senior Care

Overbrook Pointe

Crafted with style

[Read More](#) →

Laguna Honda Replacement Hospital

RoseCrest Assisted Living

Tom Grden <Thomas.Grden@stantec.com>

Renz Weinmann <Renz.Weinmann@stantec.com>

Tracey Graham, <Tracey.Graham@stantec.com>

Please check out our website:
www.Stantec.com/senior-care



Recent Projects



Wexford Creek
Nanaimo, British Columbia



Copper Sky Assisted Living Facility
Spruce Grove, Alberta



Saint Joseph Villa Skilled Nursing and Retirement Home
Flourtown, Pennsylvania



Veterans Ad

