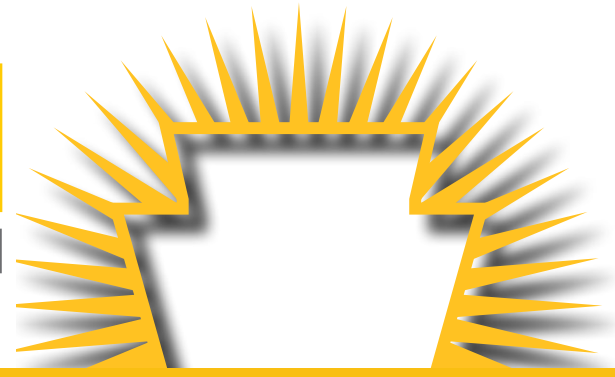


PACAH

Pennsylvania Coalition of Affiliated
Healthcare & Living Communities

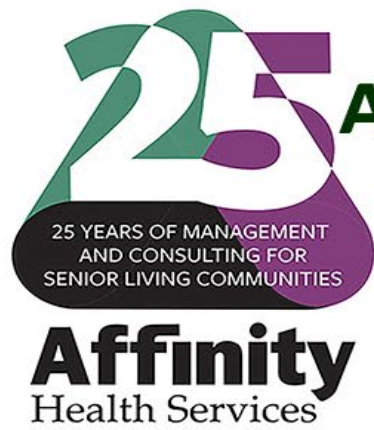


2022

FALL CONFERENCE

September 27 - 29th

Hilton Harrisburg
Harrisburg, PA



Affinity Health Services

*Balancing Resident Care
and Financial Stability!*

- Regulatory Compliance
- Mock Survey
- Infection Control Surveys
- Directed In-Service Training
- Clinical Service Support
- Financial Services Support
- Strategic Campus Repositioning
- Marketing, Admissions Development
- Billing, Revenue Cycle Management
- Operations, Governance Support

5-Star Customer Satisfaction

“Affinity billing services has decreased our financial office expenses and have made us significantly more effective and efficient in terms of Accounts Receivable Management.”

*- Jason Cumello, Administrator/Director
Cedarbrook Senior Care and Rehab
County of Lehigh*

“Affinity is a treasure to have on your team in this ever-changing environment of nursing home care.”

*- Jennifer Stewart-King, NHA
Gracedale Nursing Home
County of Northampton*

Your Success Is Our Success!

www.AffinityHealthServices.net

877-311-0110

TABLE OF CONTENTS

Executive Director’s Welcome	5
Sponsors	8 - 9
Agenda at a Glance	12 - 13
Conference Agenda	14 - 21
Speakers	22

SPECIAL THANKS TO OUR SPONSORS

AdvantageCare Rehabilitation, LLC	6
Affinity Health Services	2
CHR Consulting Services, Inc.	7
Kennedy, P.C. Law Offices	7
PELICAN Insurance, RRG	23
Premier Therapy, LLC.	4





**TOUGH
TIMES
DON'T LAST
TOUGH
TEAMS DO**

Has COVID made you feel like you're on a losing team?

That can change when you have an **MVP** (Most Valuable Partner) on your side. It can be hard to find that MVP, so let us share what our customers are saying.

“ The assistance and support Premier Therapy has provided for our residents during COVID is unmeasurable. I cannot thank your team enough for the leadership and guidance when organizing your staff along with ours to help in EVERY way possible.

Superheroes...Angels...Warriors... we will never forget what they did for us. ”

-Paula Lussi, RN DON



We're ready. Put us in, Coach!

Provider of Physical, Occupational & Speech Therapy
Vicki Esoldo Javens, President/Owner
EmbracePremier.com

Welcome from PACAH's Executive Director

Dear PACAH members and conference attendees –

Welcome to PACAH's 2022 Fall Conference. We are excited to announce that we are finally back to full in-person capacity. At the same time, we are continuing to incorporate our live streaming option so we can offer a wide array of options for people to attend.

It seems like we continue to discuss evolution with how we operate as an organization and how members care for their residents. While many of the regulations around infection control are steady, we continue to see little tweaks in how operations are conducted. We expect this to continue soon as we finally have a chance to spend time evaluating the smaller details. This is true for PACAH as well as for our members. Nevertheless, our goal has never changed: provide every PACAH member with the knowledge and resources to understand how to climb out of COVID-19 in a better structure and management than pre-COVID-19.

Changes are on the horizon. New payment systems are going to be implemented. Infection control and emergency preparedness are going to be points of emphasis for years to come. All these issues will stay at the forefront of our work for several years, all the while watching to ensure outbreaks don't increase and better resident care is progressing. PACAH will continue to provide the information and advocacy facilities need to ensure that you are receiving the tools need.

As we move into 2023, I want to, again, express my deepest gratitude towards all the work PACAH members have done since I have joined PACAH. All I have known is PACAH during the COVID-19 pandemic, so I hope 2023 brings so normalcy in a time that is so pivotal to the long-term care community.

Along with our President, Andrew Naugle, Executive Board, and Kim, I want to thank everyone for making this conference possible.

Chase Cannon
Executive Director, PACAH





As a post-acute provider, Advantage provides contract therapy to seniors in skilled nursing facilities, along with home health and hospice services to individuals in SNF, ALF, IL or in their personal residence. Advantage is a market leader in Pennsylvania secondary to our "patient-first" culture as well as our commitment to superior clinical outcomes. Our clinicians are committed to the Advantage motto; "You Deserve to Get Better: Better Service, Better Quality, Better Results". Whether you are a patient, an employee, or our customer, our mission is to ensure " You Deserve to Get Better".

888.384.0395
www.feeltheadvantage.com



A PHARMACY PARTNER SINCE 1970

WORKING
TOGETHER
TO REACH
YOUR GOALS



LEARN HOW WE CAN HELP

Contact Romi Madia for
More Information

800.882.6337

Mobile: 412.596.7256
rlmadia@diamondpharmacy.com



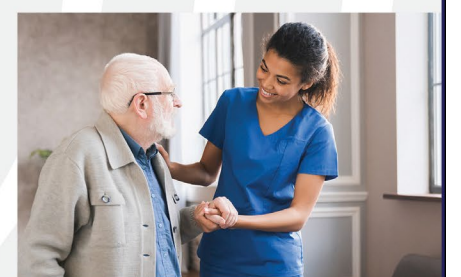
Providing operational and financial consulting services to senior care and community-based organizations

Consulting Services

- Full-service Consulting
- Clinical Reimbursement Advisory Services
- Directed In-services
- Strategic Planning
- Clinical Advisory Services

Financial Services

- Payroll/Human Resources
- IT Services
- Accounting Services
- Accounts Payable
- Third-party Billing



CALL 800.951.0410 TO DISCUSS HOW WE CAN HELP YOUR TEAM.

CHRConsultingServices.org



- ◆ Medicaid Eligibility Appeals
- ◆ Guardianships
- ◆ Collections
- ◆ Estates
- ◆ Survey & Enforcement
- ◆ Change of Ownership

Dedicated to providing legal services to the long-term care provider community.

John N. Kennedy, Esquire †*§
Benjamin J. Glatfelter, Esquire †*§
Laurie S. Kennedy, Esquire †
Casey L. Slotter, Esquire †€
Adam P. Fleischer, Esquire †*♦
Kevin L. Morris, Esquire † §
Mary C. Conn, Esquire †

† Licensed in Pennsylvania
§ Licensed in Maryland
* Licensed in New Jersey
€ Licensed in Ohio
♦ Licensed in New York



KENNEDY, PC
LAW OFFICES

www.kennedypc.net | Toll Free (877) 833-7100

Locations:

Harrisburg, PA | Harleysville, PA | Carnegie, PA
Annapolis, MD | Cherry Hill, NJ | New York, NY

PACAH 2022 FALL CONFERENCE SPONSORS

Affinity Health Services - Welcome Reception

affinityhealthservices.net
Denise McQuown-Hatter
NHA, President and CEO
(877) 311-0110
dmh@affinityhealthservices.net



Affinity Health Services was formed to provide comprehensive management services for senior living providers. Today, we provide a continuum of services that includes both comprehensive management and consulting and advisory services to senior living communities. Our mission is to share our affinity for providing consulting and management by customizing services while achieving balance between care and financial stability.

Premier Therapy, LLC - Hotel Room Key Cards

embracepremier.com
Scott M. Slipko
Business Development Manager
(724) 417-8840
sslipko@embracepremier.com



Premier Therapy is a privately owned therapy services provider who has delivered rehabilitation care for over 20 years in senior living communities, including long-term care, short-term rehab, outpatient, assisted living and home health settings. We provide the therapy professionals, strategic management teams, and leadership needed for your rehab departments to excel while demonstrating a passion for enhancing the quality of life for our residents/patients.

PELICAN Insurance, RRG - PELICAN Training, Lunch, Conference Break

pacounties.org/insurance/pelican
Andrew C. Smith
Risk Control Specialist/PELICAN Marketing Specialist
(717) 736-4769
asmith@pacounties.org



PELICAN Insurance is a risk retentions group (RRG) based out of Vermont and is a sponsored program of PACAH. PELICAN provides general liability and professional liability insurance coverage to all nursing homes in Pennsylvania and Maryland. PELICAN offers dedicated and personal risk control and claims representatives who are focused on providing excellent customer services to PELICAN members.

Advantage - Conference Name Badges

feeltheadvantage.com
Amy Hancock, OT
President/CEO and Co-Owner
(844) 275-2205
ahancock@feeltheadvantage.com



The consultants, practitioners, and health care providers at Advantage work together to achieve one mission: to help people get healthier and achieve independence to improve their quality of life. AdvantageCare Rehabilitation, Advantage Home Health Services, and Care Coordination Management comprise the Advantage group of companies, which deliver contract health care, nursing, therapy, and social services to patients.

PACAH 2022 FALL CONFERENCE SPONSORS

CHR Consulting Services, Inc. - CEU Tracking

chrconsultingservices.org
Tricia Whaley
Senior Director Provider Relations
(267) 965-1010
twhaley@chrmail.org



We serve a wide range of not-for-profit, county and for-profit elder care communities. We are the region's "go to" experts on timely trends and developments in this rapidly changing industry. But most of all, we have never wavered from our goal of helping providers deliver exceptional care, one person at a time. Our clients include long-term and personal care facilities as well as assisted living homes and residential retirement communities.

Kennedy, PC Law Offices - Conference Registration

kennedypc.net
John N. Kennedy, Esq.
President & CEO
(717) 233-7100
jkennedy@kennedypc.net



Long-term care facilities face unique legal challenges. At Kennedy, PC Law Offices, this is our primary area of practice, and our specialization affords us considerable resources to employ on your behalf. No matter the scope of the issue that your organization is confronting, our team is prepared to assist you. As a provider of long-term care, you have two priorities: the success of your organization and the well-being of your patients.



PACAH 2023 SPRING CONFERENCE & VENDOR SHOW
Pennsylvania Coalition of Affiliated Healthcare & Living Communities
April 17 - 19, 2023
Penn Stater Hotel & Conference Center

Get all the benefits of a statewide association, at a price you can actually afford.



Pennsylvania Coalition of Affiliated Healthcare & Living Communities

Make your voice heard - JOIN TODAY!

PACAH MEMBERSHIP BENEFITS:

- Affiliation with the County Commissioners Association of Pennsylvania (CCAP), giving members an instant lobbying influence unparalleled by other associations
- An association seat on CCAP's Human Services Committee and commissioner liaisons to PACAH, providing policy support from local elected officials
- One "FREE Call" with expert legal counsel plus follow-up reduced legal services
- Opportunity to sit on PACAH's committees
- Regular email and newsletter updates on issues impacting long-term care for an unlimited number of staff
- Access to PACAH Listserv to discuss issues with fellow members
- FREE webinars with CEUs
- Regional meetings to discuss issues with members
- Discounted registration fees to PACAH's two yearly statewide conferences, offering NHA, PC, RC/AL, Fiscal, Nursing and Dietary credits and the opportunity to network and learn from premier experts in the healthcare and long-term care industry
- FREE quarterly fiscal staff meetings with OLTL staff
- And more!

CONTACT

Chase Cannon
Executive Director
ccannon@pacounties.org
(717) 736-4732

Kim Deline
Meeting & Marketing Manager
kdeline@pacounties.org
(717) 736-4741



SORENSEN
WILDER
& Associates

Specializing in Safety & Security Solutions

185 E. North Street
Bradley, IL 60915
815-933-5977

www.swa4safety.com

swa@swa4safety.com

@SorensenWilder

**NATIONALLY RECOGNIZED EXPERTISE
RIGHT IN YOUR OWN BACK YARD**

- Security Vulnerability Assessments
- Active Shooter Preparedness, Response, and Recovery
- OSHA Compliance / Compliance Audits
- Workplace Violence Prevention
- Safety Program Development
- Integrated Security Systems Design
- Personal Safety for Traveling Workers
- Emergency Preparedness and Compliance
- Fire Safety, Life Safety Exercises, and Drill Facilitation
- Safety Committee Oversight
- Security Training
- ...and much more

LATSHA DAVIS & MARSHALL



ATTORNEYS AT LAW

ldylaw.com

Delivering a broad spectrum of legal services to Pennsylvania's post-acute providers since 1994.

1700 Bent Creek Blvd., Suite 140, Mechanicsburg, PA 17050
T 717.620.2424 F 717.620.2444



TUESDAY, SEPTEMBER 27TH

10 a.m. - noon	PACAH Executive Board Meeting (Private)
11 a.m. - 4 p.m.	Registration
1 - 4:15 p.m.	PELICAN Training - The Active Shooter in the LTC Facility: Planning for...Responding to...Recovering from the Unthinkable
2:30 p.m.	Afternoon Snack Break
2 p.m. - 4 p.m.	Fiscal Management Committee Meeting (Private)
5 - 7 p.m.	Welcome Reception

WEDNESDAY, SEPTEMBER 28TH

7 - 8 a.m.	Continental Breakfast
7:30 a.m. - 4 p.m.	Registration
8 - 9 a.m.	Keynote Speaker - Kay Frances - The Funny Thing About Stress
9:30 - 10:30 a.m.	Key Foundational Systems for Clinical Success
9:30 - 10:30 a.m.	Employment and Labor Law: A Year in Review
10:30 a.m.	Morning Snack Break
10:45 - 11:45 a.m.	PDPM Reimbursement - Leaving no Stone Unturned
10:45 - 11:45 a.m.	When Life Safety Arrives: A Guide to a Successful Survey and Dealing with Local Code Officials
noon - 1 p.m.	Lunch
1:15 - 2:15 p.m.	PA Department of Health Update

2:30 - 3:30 p.m.	Bed Exceptions, Transfers, and Replacements - Legal and Operational Issues Relating to SNF Expansion, Right-Sizing and Reconfigurations
2:30 - 3:30 p.m.	Hot Employment Topics for Long-Term Care Providers in 2022 and 2023
3:30 p.m.	Afternoon Snack Break
3:45 - 4:45 p.m.	Are You Ready for the 21st Century Cures Act?
3:45 - 4:45 p.m.	Clear Concise Communication to Improve Outcomes

THURSDAY, SEPTEMBER 29TH

7:30 a.m. - 11 a.m.	Registration
7 a.m. - 8 a.m.	Breakfast
8 - 9 a.m.	PACAH Business Meeting
9:15 - 10:15 a.m.	Preparing for New Enforcement Issues
10:15 a.m.	Morning Snack Break
10:30 - 11:30 a.m.	Fiscal Officers Group Meeting/Office of Long-Term Living Update

Full Conference agenda begins on page 14

CREDIT APPROVAL NOTICE

This program has been approved for Continuing Education for 12 total participant hours by NAB/NCERS Approval #20230926-16-A86979-IN - In-Person Learning

This program has been approved for Continuing Education for 12 total participant hours by NAB/NCERS Approval #20230926-16-A87066-DL - Distance Learning

PACAH is an approved provider through the Department of Human Services Bureau of Human Services Licensing. Total CEUs available: 4

This program offers 16 total credit hours fulfilling the requirements of the Pennsylvania State Board of Nursing. (12 maximum available)

PACAH is registered with the Pennsylvania State Board of Accountancy and is approved for 4 total credit hours.

This program has been approved for continuing education (CE) hours by the Certifying Board for Dietary Managers for 16 CE Hours. Approval number 167097 - 13 General; 3 Sanitation (12 maximum available)

CEU LEGEND

NHA - Nursing Home Administrators RN - Nursing
 RC/AL - Assisted Living Administrators CPE - Fiscal
 PC - Personal Care Home Administrators CBDM - Dietary

CERTIFICATES OF ATTENDANCE

Certificate of Attendance Review

Per NAB/NCers guidelines, PACAH is required to upload all CEUs earned by attendees to their CE Registry within thirty (30) days post-conference. An email will be sent to all attendees by October 20, 2022. IT IS VERY IMPORTANT that you read this email, download your certificate of attendance, and contact Kim Deline by the deadline noted in the email with any revisions to your certificate of attendance.

NAB/NCers CEUs will be uploaded to the registry per NAB/NCers guideline by October 27, 2022. After CEUs are uploaded to the CE Registry, corrections CANNOT be made.

Virtual Attendance Confirmation

In order to earn CEUs, it is required that you are present for 100% of the sessions you virtually attend. On Friday, September 30, 2022, you will receive a link to an online form. This form confirms the sessions that you attended and acts as a promissory that you were present and paying attention for the full duration of each session attended.

Exceptions to the rule do permit restroom breaks, or a brief phone call, as emergencies do happen in LTC.

The results of this form will act as a confirmation of sessions that you attended and will be compared with the results we receive via our live streaming platform.

SPEAKER & CONFERENCE EVALUATION

Online evaluation forms will be sent via email post-conference. Please take a moment to complete this evaluation. Accredited continuing education organizations require a completed evaluation. These evaluations also help PACAH improve our conference process and educational sessions.

TUESDAY, SEPTEMBER 27TH

PACAH EXECUTIVE BOARD MEETING AND LUNCH (PRIVATE)

10 a.m. - noon
 Bridgeport Board Room

REGISTRATION

11 a.m. - 4 p.m.
 Pre-Governor Board Room

GENERAL SESSION - PELICAN TRAINING - "THE ACTIVE SHOOTER IN THE LTC FACILITY: PLANNING FOR... RESPONDING TO...RECOVERING FROM THE UNTHINKABLE" - SPONSORED BY PELICAN INSURANCE, RRG

1 - 4:15 p.m.
 NHA – 3 (eligible for Pennsylvania NHA Board Emergency Preparedness-Specific CEUs)
 RC/AL - 3
 PC - 3
 RN – 3 **LIVE STREAMING LINK**
 CBDM - 3
 Lancaster Ballroom

The recent tragedy in Uvalde, TX reminds us that the risk of an active shooter remains real, and facilities must be prepared to respond. This Sorensen, Wilder & Associates program has been recognized as the "model program" for LTC facilities across the nation and has been endorsed by Argentum and The Joint Commission.

*Steve Wilder, BA, CHSP, STS, COO
 Sorensen Wilder & Associates*

AFTERNOON BREAK - SPONSORED BY PELICAN INSURANCE, RRG

2:30 - 3:30 p.m.
 Prefunction Lancaster

FISCAL MANAGEMENT COMMITTEE MEETING (PRIVATE)

2 - 4 p.m.
 Bridgeport Boardroom

WELCOME RECEPTION - SPONSORED BY AFFINITY HEALTH SERVICES

5 - 7 p.m.
 Metropolitan Room

WEDNESDAY, SEPTEMBER 28TH

CONTINENTAL BREAKFAST

7 - 8 a.m.
 Prefunction Lancaster

REGISTRATION

7:30 a.m. - 4 p.m.
 Pre-Governor Board Room

GENERAL SESSION - KEYNOTE, KAY FRANCES - "THE FUNNY THING ABOUT STRESS"

8 - 9 a.m.
 NHA – 1
 RC/AL - 1
 PC - 1 **LIVE STREAMING LINK**
 RN – 1
 CBDM - 1
 Lancaster Ballroom

We all know that we should manage our stress for peak performance in all areas of our lives, but we don't necessarily know why or how. It's Kay Frances to the STRESS-cue!

In the frenzied world of long-term care, folks need to be reminded of the importance of managing their stress, embracing change and maintaining a positive attitude for peak performance and success in all areas of their lives. The so called "little things" in life can become cumulative if we don't stop them in their tracks. We need to manage our stress before it manages us!

We also need to remember that change is an inevitable part of life, but how we choose to view it is up to us!

Kay is never far from her roots as a professional standup comedian, so prepare to laugh while you learn without straining your brain!

Kay Frances, MBA, BS Health & Education, CSP



BREAKOUT SESSION - "KEY FOUNDATIONS FOR CLINICAL SUCCESS"

9:30 - 10:30 a.m.

NHA - 1

RC/AL - 1 [LIVE STREAMING LINK](#)

RN - 1

CBDM - 1

Bridgeport Boardroom

In this session, we will review key foundational systems to monitor clinical systems and quality outcomes thru the Quality Assurance and Performance Improvement (QAPI) process. The processes, structures and framework reviewed will enable participants to build a quality monitoring program to: mitigate risk, initiate and monitor process improvement initiatives and allow for ongoing quality monitoring.

*Angela M. Huffman, RN, WCC
Vice President Clinical Services
Affinity Health Services*

BREAKOUT SESSION - "EMPLOYMENT AND LABOR LAW: A YEAR IN REVIEW"

9:30 - 10:30 a.m.

NHA - 1

RC/AL - 1 [LIVE STREAMING LINK](#)

PC - 1

RN - 1

CBDM - 1

Brady Boardroom

Employers in the aging services field face the same issues confronted by other private employers while simultaneously being responsible for compliance with a whole host of regulations and other employment issues specific to their industry.

Whether session participants are part of a large or small human resources department, vice president or a generalist, they will be advised about recent developments in employment and labor law, including COVID issues, the Family Medical and Leave Act, Title VII discrimination cases, National Labor Relations Board activity, social media issues, privacy issues and medical marijuana.

Other areas of emphasis will include litigation settlements and strategies to avoid protracted litigation.

Presenters will draw on their experience by sharing real life examples and hypothetical scenarios to help participants understand how various employment and labor laws apply to their employers.

Participants will learn best practices under employment and labor laws, rules, regulations, and court decisions to successfully avoid legal mistakes and the potential for litigation.

Context will be provided by updated legal authority which can be used to the employer's advantage in litigation before the

Pennsylvania Human Relations Commission, the U.S. Equal Employment Opportunity Commission, and the state and federal courts. Depending on the introduction of rules, regulations, legislation, and court rulings between now and September 2022, this session will also address other "update issues" in state, federal and local law as they apply to labor and employment issues.

*Glenn R. Davis, Esq.
Latsha Davis & Marshall, P.C.*

*Andrew P. Dollman, Esq.
Latsha Davis & Marshall, P.C.*

MORNING SNACK BREAK

10:30 a.m.

Prefunction Lancaster

BREAKOUT SESSION - "PDPM REIMBURSEMENT - LEAVING NO STONE UNTURNED"

10:45 - 11:45 a.m.

NHA - 1

RC/AL - 1

RN - 1 [LIVE STREAMING LINK](#)

CPE - 1

CBDM - 1

Bridgeport Boardroom

The Proposed Rule upcoming changes of 3.9% parity adjustment will be finalized during Q3 2022. The Patient Driven Payment Model (PDPM) captures all patients' conditions, so not surprising that nursing, SLP and non-therapy ancillary would increase under the model. Patients are requiring greater care with the COVID-19 pandemic.

This session will focus on the maximization of PDPM reimbursement and clinical outcomes for patients receiving skilled nursing and therapy care in the post-acute care arena. This process is initiated with the referral process from the hospital and accurate identification of the I0020B diagnosis at time of admission. Timely intervention by the interdisciplinary team and collaboration with the Minimum Data Set (MDS) completion.

Objectives:

- Maximize clinical outcomes and reimbursement under PDPM
- Enhance collaboration with PT/OT/ST for section C, D, GG, and K on the MDS
- Accurate identification of the I0020B diagnosis and reason for the skilled admission to the skilled nursing facility
- Review of the non-case mix conditions and collaboration to capture all services provided during the skilled stay

*Tricia Whaley
Senior Director Provider Relations
CHR Consulting Services, Inc.*

*Susan Murtha
Area Manager
Trinity Rehab Services*

BREAKOUT SESSION - "WHEN LIFE SAFETY ARRIVES: A GUIDE TO A SUCCESSFUL SURVEY AND DEALING WITH LOCAL CODE OFFICIALS"

10:45 - 11:45 a.m.

NHA - 1

RC/AL - 1 [LIVE STREAMING LINK](#)

RN - 1

CBDM - 1

Brady Boardroom

Too often the Life Safety survey is mirrored in complex code issues that present challenges that can cause inaccurate correction response leading to continued deficient practice. This one-hour session will prepare you to inform your staff how to work through the on-site inspection and answer the deficiency with accuracy. This session is a guide to knowing your local municipal codes regarding licensure, health, zoning, building permits.

Thomas N. Micozzie
Principal
Project Development Resources

Per Diem Borough Manager
Clifton Heights Borough

LUNCH - SPONSORED BY PELICAN INSURANCE, RRG

noon - 1 p.m.
Gettysburg Ballroom

GENERAL SESSION - "PENNSYLVANIA DEPARTMENT OF HEALTH UPDATE"

1:15 - 2:15 p.m.
NHA – 1
RC/AL - 1 [LIVE STREAMING LINK](#)
RN – 1
CBDM - 1
Lancaster Ballroom

Susan Williamson, Director of the Division of Nursing Care Facilities, will provide timely information on the operations of her department as it relates to surveys and licensing. She will discuss updates and statistical data on Pennsylvania's nursing facilities, new emphasis from the federal government, and other issues, impacting nursing facilities from the perspective of licensing and surveys.

Charlie Schlegel, Director of the Division of Safety Inspection, will also provide updates on critical life-safety issues.

Charles Schlegel, Director, Division of Safety Inspection
Pennsylvania Department of Health, Division of Long-Term Care

Susan Williamson, Director, Division of Nursing Care Facilities
Pennsylvania Department of Health, Division of Long-Term Care

BREAKOUT SESSION - "BED EXCEPTIONS, TRANSFERS, AND REPLACEMENTS - LEGAL AND OPERATIONAL ISSUES RELATING TO SNF EXPANSION, RIGHT-SIZING, AND RECONFIGURATIONS"

2:30 - 3:30 p.m.
NHA – 1
RC/AL - 1 [LIVE STREAMING LINK](#)
RN – 1
CBDM - 1
Bridgeport Boardroom

In the wake of the COVID-19 pandemic, providers are reviewing the institutional footprint of their operations, to determine the "right size" facility to maintain. Medicaid-participating organizations seeking to replace, renovate or increase the bed complement of their nursing facilities, or to transfer beds with other providers, must receive pre-approval from the Department of Human Services to do so. This session will address the regulatory requirements that must be satisfied in order to receive approval and will discuss the operational challenges posed by the regulations.

David C. Marshall, Esq.
Managing Shareholder
Latsha Davis & Marshall, P.C.

BREAKOUT SESSION - "HOT EMPLOYMENT TOPICS FOR LONG-TERM CARE PROVIDERS IN 2022 AND 2023"

2:30 - 3:30 p.m.
NHA – 1
RC/AL - 1 [LIVE STREAMING LINK](#)
PC - 1
RN – 1
CBDM - 1
Brady Boardroom

The Perils Involved in "Outsourcing" Resident Care

Independent contractors in both residential care and the home healthcare industry are increasingly challenging their designation as contractors and asserting they should be treated as employees. Recently, numerous class action lawsuits have been filed, asserting their right to overtime pay and related employee benefits. Employers who outsource care urgently need to review their management, documentation and employment practices to take the appropriate steps to protect their organizations and make sure their relationship with contractors fall within the legal parameters.

Objective: Participants will be able to identify the potential pitfalls involved in outsourcing resident care, learn about how to manage this relationship, and work to limit employer liability.

Handling Vaccine Accommodation Requests

While 2021 is behind us, the lasting and ongoing effects of the pandemic on workplace safety, hiring, employee productivity, and HR compliance remain. Employers continue to be faced with requests for accommodation with respect to the COVID-19 vaccine and boosters, and forced to juggle staffing constraints, resident safety and employee concerns. Employers need to be aware of their rights and obligations with respect to evaluating accommodation requests and the overall impact on the workplace.

Objective: Participants will be provided with direction as to evaluating workplace accommodation requests in order to both protect the safety and rights of their employees and residents in this challenging environment.

Stephen J. Fleury, Jr., Esq.
Senior Counsel
Saxton & Stump

Richard L. Hackman, Esq.
Shareholder, Chair – Labor and Employment Group
Saxton & Stump

BREAKOUT SESSION - "ARE YOU READY FOR THE 21ST CENTURY CURES ACT?"

3:45 - 4:45 p.m.
NHA – 1
RC/AL - 1
PC - 1 [LIVE STREAMING LINK](#)
RN – 1
CPE - 1
CBDM - 1
Bridgeport Boardroom

The Information Blocking Rule was introduced as part a healthcare innovation law enacted in December 2016. The related rules promote health information interoperability and prohibit information blocking by "actors." The rule puts residents in charge of their health care and records which is at the center of the Centers for Medicare & Medicaid Services' (CMS's) and Pennsylvania's work toward a value-based healthcare system.

The final rules promote innovation in healthcare technology to deliver better information, more conveniently, to patients, clinicians and payers. It also promotes transparency by providing opportunities for the healthcare consumer to regain visibility in the services, quality, and costs of healthcare. In essence, the rule is "anti-blocking" of information by giving residents and their providers secure access to health information and promoting access to all of their electronic health information (EHI).

This rule is not replacing the privacy rule, which addresses access to both electronic and paper-based protected health information.

The focus of this presentation is on compliance with the information blocking section and ensuring authorized access to EHI, particularly for those in skilled nursing facilities.

Cynthia A. Haines, Esq.
Principal, Health Care Practice Group
Co-Chair, Information Privacy & Security Practice Group
Post & Shell, P.C.

BREAKOUT SESSION - "CLEAR CONCISE COMMUNICATION TO IMPROVE OUTCOMES"

3:45 - 4:45 p.m.

NHA - 1

RC/AL - 1 [LIVE STREAMING LINK](#)

RN - 1

CBDM - 1

Brady Boardroom

In this era of constant change, interruptions, and sensory deprivation, it is critical that messages are conveyed and understood at all levels. The effectiveness of message reception directly impacts activity in the healthcare setting and affects outcome quality. Communication is only effective when both the sender and receiver reach a clear and mutual understanding of the information being exchanged. To achieve this, the message needs to be thoughtfully delivered and packaged. If it's verbal communication, your tone and body language can either impair or enhance its clarity. If it's written, the format of the document and consistency in style can have the same effect. In this session, we will explore all levels of effective exchange including family, employee, and patient communication. Communication systems affect nearly every aspect of a facility's operations. We will focus on four of the most important ones; patient care/outcomes, readmission rates, family experience, and work culture. A focus on common pitfalls as well as ways to avoid them through effective policy and best practices will be reviewed.

Objectives:

- Define ways in which poor communication affects all levels of facility performance
- Define common pitfalls and barriers that could lead to poor patient, family, and facility outcomes
- Describe at least three effective programs and strategies that work to promote effective concise communication and outcomes

*Heather Meadows, CCC/SLP/CDP
Director of Operations
Premier Therapy, LLC*

*Julie Bellucci, MS, CCC-SLP
Director of Clinical Development
Premier Therapy, LLC*

THURSDAY, SEPTEMBER 29TH

REGISTRATION

7:30 - 11 a.m.

Governor Boardroom

BREAKFAST

7 - 8 a.m.

Gettysburg Ballroom

GENERAL SESSION - "PACAH BUSINESS MEETING"

8 - 9 a.m.

NHA - 1

RC/AL - 1 [LIVE STREAMING LINK](#)

RN - 1

CBDM - 1

Lancaster Ballroom

PACAH's executive director will update members on current policy, regulatory and legislative issues impacting long-term care facilities. These updates will include information on funding, IGT, Community HealthChoices, COVID-19, and other pertinent issues.

*Chase Cannon
Executive Director
Pennsylvania Coalition of Affiliated Healthcare & Living Communities (PACAH)*

GENERAL SESSION - "PREPARING FOR NEW ENFORCEMENT ISSUES"

9:15 - 10:15 a.m.

NHA - 1

RC/AL - 1 [LIVE STREAMING LINK](#)

RN - 1

CBDM - 1

Lancaster Ballroom

This session will explore new enforcement developments at the federal, state and local levels. We will discuss Office of Inspector General (OIG) and Department of Justice (DOJ) initiatives and what you can do to prepare staff in the event there is the dreaded "knock on the door."

We will also consider new guidance from the Centers for Medicare & Medicaid Services (CMS) and the anticipated release of the updated Department of Health regulations concerning survey enforcement and interpretive guidelines. Attendees will be encouraged to discuss best practices and techniques.

*Paula G. Sanders, Esq.
Principal
Chair, Health Care Practice Group
Post & Schell, P.C.*

MORNING SNACK BREAK - SPONSORED BY PELICAN INSURANCE, RRG

10:15 a.m.

Prefunction Lancaster

GENERAL SESSION - "FISCAL OFFICERS GROUP MEETING/OFFICE OF LONG-TERM LIVING UPDATE"

10:30 - 11:30 a.m.

NHA - 1

RC/AL - 1 [LIVE STREAMING LINK](#)

RN - 1

CPE - 1

CBDM - 1

Lancaster Ballroom

The Department of Human Services' (DHS) Office of Long-Term Living (OLTL) staff will report on current initiatives. The discussion will include implementation throughout the state, any ongoing issues, payment of claims, and answer any questions from attendees. Other initiatives being undertaken by OLTL and DHS will also be discussed as well as the current budget.

*Jamie Buchenaur,
Deputy Secretary
PA Department of Human Services, Office of Long-Term Living*

*Daniel Sharar
Director, Bureau of Finance
PA Department of Human Services, Office of Long-Term Living*

PACAH 2022 FALL CONFERENCE SPEAKERS

Julie Bellucci, MS, CCC-SLP
Director of Clinical Development
Premier Therapy, LLC
110 Central Square Dr.
Beaver Falls, PA 15010
(724) 775-8669
jbellucci@embracepremier.com

Jamie Buchenaur
Deputy Secretary
Pennsylvania Department of Human
Services, Office of Long Term Living

Chase Cannon, Esq.
Executive Director
PACAH
PO Box 60769
Harrisburg, PA 17106-0769
(770) 880-2171
ccannon@pacounties.org

Glenn R. Davis, Esq.
Latsha Davis & Marshall, P.C.
1700 Bent Creek Blvd., Suite 140
Mechanicsburg, PA 17050
(717) 620-2424
GDavis@ldylaw.com

Andrew P. Dollman, Esq.
Latsha Davis & Marshall, P.C.
1700 Bent Creek Blvd., Suite 140
Mechanicsburg, PA 17050
(717) 620-2424
ADollman@ldylaw.com

Stephen J. Fleury, Jr., Esq.
Senior Counsel
Saxton & Stump
280 Granite Run Drive, Suite 300
Lancaster, PA 17601
(717) 556-1062
sjf@saxtonstump.com

Kay Frances, MBA, BS Health & Education, CSP
info@kayfrances.com

Richard Hackman, Esq.
Shareholder, Chair – Labor and Employment Group
Saxton & Stump
280 Granite Run Drive, Suite 300
Lancaster, PA 17601
(717) 556-1062
rlh@saxtonstump.com

Cynthia A. Haines, Esq.
Principal, Health Care Practice Group
Co-Chair, Information Privacy & Security Practice Group
Post & Schell, P.C.
17 N. Second St.
Harrisburg, PA 17101
(717) 612-6027
chaines@postschell.com

Angela M. Huffman, RN, WCC
Vice President of Clinical Services
Affinity Health Services, Inc.
942 Philadelphia St.
Indiana, PA 15701
(724) 463-1010
ahuffman@affinityhealthservices.net

David C. Marshall, Esq.
Managing Shareholder
Latsha Davis & Marshall, P.C.
1700 Bent Creek Blvd., Suite 140
Mechanicsburg, PA 17050
(717) 620-2424
dmarshall@ldylaw.com

Heather Meadows, CCC/SLP/CDP
Director of Operations
Premier Therapy, LLC
110 Central Square Dr.
Beaver Falls, PA 15010
(724) 775-8669
HMeadows@embracepremier.com

Thomas N. Micozzie
Principal
Project Development Resources
925 Providence Road, Suite 13
Secane PA 9018
(610) 476-1377
Tmicozzie@gmail.com

Susan Murtha
Area Manager
Trinity Rehab Services
72640 Fairport New Athens Rd.
St Clairsville, Ohio 43950
Susie.Murtha@TrinityRehabServices.com

Paula G. Sanders, Esq.
Principal & Chair - Health Care Practice Group
Post & Schell, P.C.
17 N. Second St.
Harrisburg, PA 17101
(717) 612-6027
psanders@postschell.com

Charles Schlegel
Director, Division of Safety Inspection
Pennsylvania Department of Health

Daniel Sharar
Chief Financial Officer/Director of Finance
Pennsylvania Department of Human
Services, Office of Long Term Living

Tricia Whaley
Senior Director Provider Relations
Complete HealthCare Resources -
Eastern Inc.
200 Dryden Rd., #3100
Dresher, PA 19025
twhaley@chrmail.org

Steve Wilder, BA, CHSP, STS
COO
Sorensen, Wilder & Associates
185 E. North St.
Bradley, IL 60915
(815) 933-5977
swilder@swa4safety.com

Susan Williamson
Director, Division of Nursing Care Facilities
Pennsylvania Department of Health

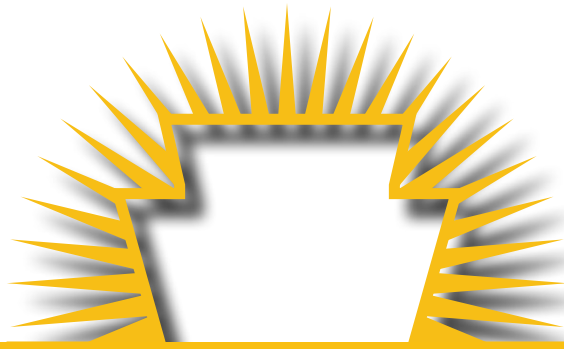


PELICAN is a Reciprocal Risk Retention Group, which provides Professional Liability and General Liability Insurance coverage.

WHY JOIN PELICAN?

- **Conducting onsite facility safety audits and walkthroughs with a dedicated and personal risk control and claims representative who are focused on providing excellent customer service.**
- **PELICAN offers the most competitive bed rates, a \$5,000 risk management grant for each facility and millions in dividends returned to PELICAN subscribers.**
- **Free educational training workshops, publications and webinars offered annually.**
- **PELICAN bed rate is \$675!**

Contact Andrew Smith at asmith@pacounties.org or (717) 736-4769 to hear more about how PELICAN can save your facility money!



PACAH

Pennsylvania Coalition of Affiliated
Healthcare & Living Communities

PO Box 60769
Harrisburg, PA 17106-0769
(717) 526-1010
fax (717) 526-1020

www.pacahpa.org



www.facebook.com/pacahpa



www.linkedin.com/company/pacah



www.twitter.com/PACAHPa